



APARTMENT SPECIFICATION

INTERIOR FINISHES

- Mid-tone chevron timber floor to hallway, living room and kitchen (including duplex third bedroom)
- Mid-tone broadloom carpet to bedrooms (excluding duplex third bedroom)
- Full height lacquer apartment entrance door
- Satin nickel ironmongery to front and internal doors
- Satin nickel toggle switches and sockets some with USB charging ports
- Emulsion paint finish to apartment walls, ceilings and bathrooms
- Lacquered skirting
- Energy efficient spotlights

KITCHEN/LIVING ROOM:

- Kitchen units in light grey with satin nickel handles
- Concealed LED lighting beneath wall mounted units
- Terrazzo inspired kitchen worktop
- Siemens single electric oven (one-bedroom apartments only)
- Siemens single electric & combi oven (duplex apartments only)
- Siemens double electric & combi oven (two & three-bedroom apartments only)
- Siemens four ring flush fit induction hob
- Overhead extractor fan
- Siemens integrated fridge freezer (separate fridge & freezer three-bedroom & duplex apartments only)
- Siemens integrated dishwasher
- Integrated wine cooler (two and three bedroom and duplex apartments only) (300mm for two-bedroom apartments, 600mm for three-bedroom & duplex apartments)
- Siemens Washer/dryer
- Stainless steel sink with single lever chrome mixer tap
- Integrated pull out waste bin
- TV/Satellite point (subject to purchaser subscription)
- Telephone point

BEDROOMS:

- Matt finish built in wardrobes to master and second bedroom with soft close doors. Chrome hanging rails with shelving and satin nickel handles (wardrobes to all bedrooms in duplex apartments only)
- TV/Satellite point (subject to purchaser subscription) to all bedrooms

BATHROOMS AND MASTER EN-SUITE:

- Chevron porcelain wall tiles
- Porcelain floor tiles
- Terrazzo inspired vanity storage unit with drawer

- Under counter wash basin with wall mounted mixer tap
- Satin framed mirror storage cabinet
- Kaldewei steel baths with hinged glass shower panel
- Free standing bathtub (duplex master en suite only)
- Kaldewei anti slip shower tray with hinged glass shower door
- Wall mounted white WC with soft close seat and dual push flush plate
- Chrome towel rail with heated wall panel
- Chrome robe hook
- Chrome toilet roll holder
- Satin shaver point in storage cabinet
- Feature wall lights (master en suite only)

HEATING & HOT WATER

- Central combined heat and power system providing underfloor heating and hot water throughout (duplex units have a hot water storage tank)
- Comfort cooling to living room and all bedrooms (duplex units only)

SECURITY/PEACE OF MIND

- 10 Year Warranty
- 24-hour on-site concierge service (located in the Town Hall)
- Access to apartments via audio/visual entry system
- Multi point locking to front entrance doors
- Mains supply operated heat/smoke detectors with battery back up

COMMUNAL AREAS

- Landscaped residents' gardens
- Cycle storage with secure access
- Access to certain public areas within the Town Hall
- Underground car parking with secure gated access (on selected plots, charges apply)
- Passenger lifts and stairs to all levels (Uren & Ayres only)
- Communal post boxes within residential entrance lobbies

LEASE TERM

125 Years

GROUND RENT

Studios:	£200pa
1 Bedroom:	£250pa
2 Bedroom:	£300pa
3 Bedroom:	£350pa



Whilst reasonable efforts have been made to ensure that the information provided is correct, it is designed specifically as a broad indicative guide only and Crouch End (FEC) Limited reserves the right to amend the specification at its absolute discretion as necessary and without any notice.

Crouch End (FEC) Limited assumes no responsibility and shall not be liable to any person for any loss, damage or expense caused by reliance on this information. FEC Development Management are appointed development manager of Hornsey Town Hall, The Broadway, Crouch End, N8 9JJ by the owner Crouch End (FEC) Limited (a company incorporated in England and Wales with company number 10448866 and registered address Ground Floor, 12 Stanhope Gate, London, W1K 1AW).

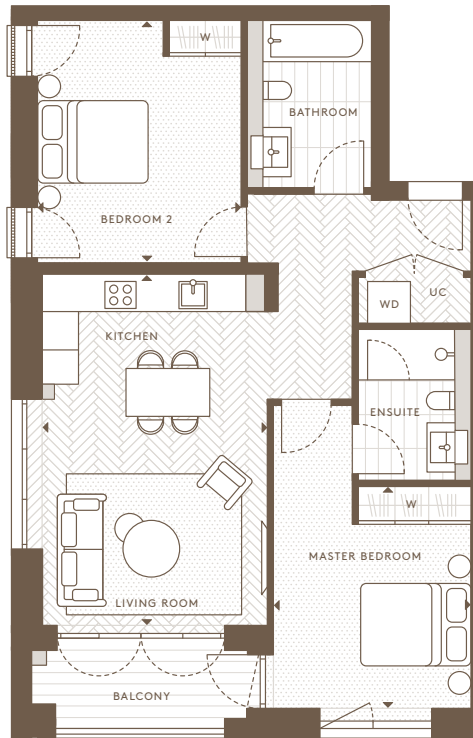


HORNSEY

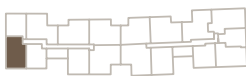
TOWN HALL

2 BEDROOM APARTMENT

Internal Area (NSA)	71.40 sq m / 768.54 sq ft
Living Area	3736 x 5792 mm
Master Bedroom	3245 x 3652 mm
Bedroom 2	3380 x 4016 mm
Balcony	5.33 sq m / 57.39 sq ft



2nd Floor
Apartments: AN 22



Ground Floor
Apartments: AN 02



1st Floor
Apartments: AN 12



Floorplans are intended to give a general indication of the proposed floor layout and refer to approximate measurements only. All stated dimensions are measures from the arrow points and are subject to tolerances of +/-5%. You are strongly advised not to order any carpets, appliances or any other goods which depend on accurate dimension before carrying out a check measure within your reserved plot following build completion. Total apartment dimension are given in NSA (Net Sales Area).

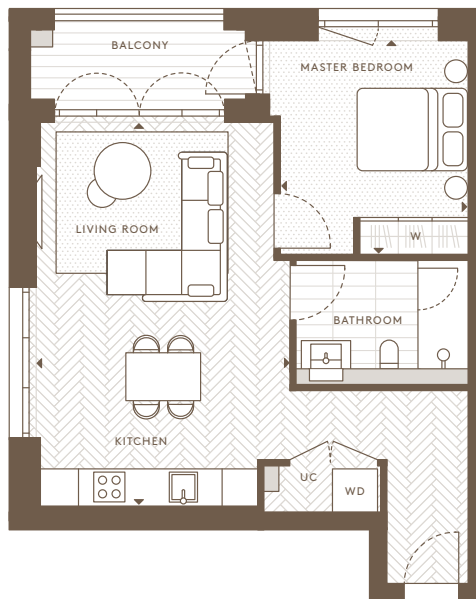


HORNSEY

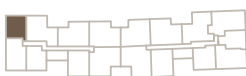
TOWN HALL

1 BEDROOM APARTMENT

Internal Area (NSA)	52.25 sq m / 562.41 sq ft
Living Area	4205 x 6332 mm
Master Bedroom	3110 x 3537 mm
Balcony	5.33 sq m / 57.39 sq ft



2nd Floor
Apartments: AN 23



Ground Floor
Apartments: AN 03



1st Floor
Apartments: AN 13



Floorplans are intended to give a general indication of the proposed floor layout and refer to approximate measurements only. All stated dimensions are measures from the arrow points and are subject to tolerances of +/-5%. You are strongly advised not to order any carpets, appliances or any other goods which depend on accurate dimension before carrying out a check measure within your reserved plot following build completion. Total apartment dimension are given in NSA (Net Sales Area).



HORNSEY

TOWN HALL

2 BEDROOM APARTMENT

Internal Area (NSA)	80.46 sq m / 866.07 sq ft
Living Area	3575 x 8887 mm
Master Bedroom	3684 x 3545 mm
Bedroom 2	3460 x 3450 mm
Balcony	5.21 sq m / 55.96 sq ft
Terrace	8.78 sq m / 94.51 sq ft
Garden	9.62 sq m / 103.55 sq ft



Ground Floor
Apartments: AN 04



Floorplans are intended to give a general indication of the proposed floor layout and refer to approximate measurements only. All stated dimensions are measures from the arrow points and are subject to tolerances of +/-5%. You are strongly advised not to order any carpets, appliances or any other goods which depend on accurate dimension before carrying out a check measure within your reserved plot following build completion. Total apartment dimension are given in NSA (Net Sales Area).



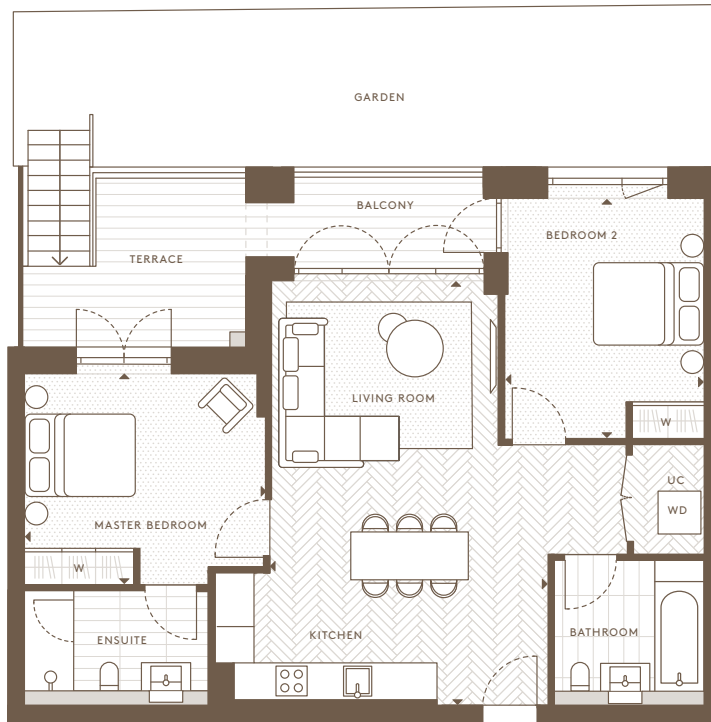
HORNSEY

TOWN HALL

2 BEDROOM APARTMENT

Internal Area (NSA)	77.23 sq m / 831.27 sq ft
Living Area	4595 x 7030 mm
Master Bedroom	4005 x 3545 mm
Bedroom 2	3265 x 4075 mm
Balcony	5.47 sq m / 58.88 sq ft
Terrace	8.60 sq m / 92.57 sq ft
Garden	28.04 sq m / 301.82 sq ft

This unit can be adapted to a wheelchair unit if required.



Ground Floor
Apartments: AN 05



Floorplans are intended to give a general indication of the proposed floor layout and refer to approximate measurements only. All stated dimensions are measures from the arrow points and are subject to tolerances of +/-5%. You are strongly advised not to order any carpets, appliances or any other goods which depend on accurate dimension before carrying out a check measure within your reserved plot following build completion. Total apartment dimension are given in NSA (Net Sales Area).

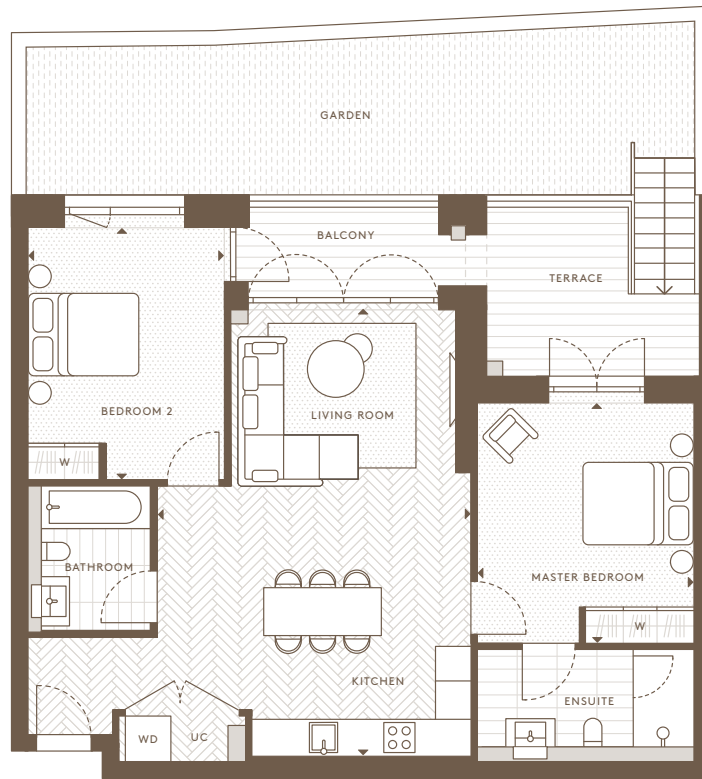


HORNSEY

TOWN HALL

2 BEDROOM APARTMENT

Internal Area (NSA)	80.34 sq m / 864.72 sq ft
Living Area	5205 x 7383 mm
Master Bedroom	3582 x 3995 mm
Bedroom 2	3296 x 4187 mm
Balcony	5.47 sq m / 58.88 sq ft
Terrace	10.02 sq m / 107.85 sq ft
Garden	28.44 sq m / 306.13 sq ft



Ground Floor
Apartments: AN 06



Floorplans are intended to give a general indication of the proposed floor layout and refer to approximate measurements only. All stated dimensions are measures from the arrow points and are subject to tolerances of +-5%. You are strongly advised not to order any carpets, appliances or any other goods which depend on accurate dimension before carrying out a check measure within your reserved plot following build completion. Total apartment dimension are given in NSA (Net Sales Area).

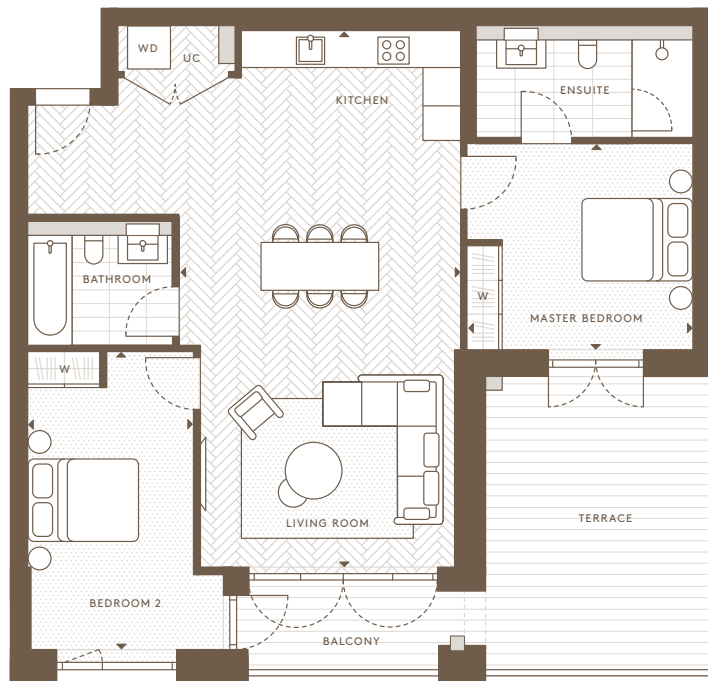


HORNSEY

TOWN HALL

2 BEDROOM APARTMENT

Internal Area (NSA)	86.88 sq m / 935.13 sq ft
Living Area	4645 x 8858 mm
Master Bedroom	3762 x 3417 mm
Bedroom 2	2750 x 4948 mm
Balcony	5.47 sq m / 58.88 sq ft
Terrace	18.37 sq m / 197.73 sq ft



Ground Floor
Apartments: AN 07



Floorplans are intended to give a general indication of the proposed floor layout and refer to approximate measurements only. All stated dimensions are measures from the arrow points and are subject to tolerances of +-5%. You are strongly advised not to order any carpets, appliances or any other goods which depend on accurate dimension before carrying out a check measure within your reserved plot following build completion. Total apartment dimension are given in NSA (Net Sales Area).



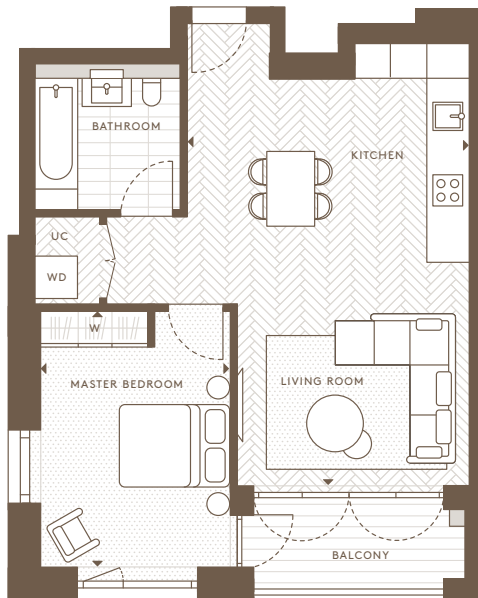
HORNSEY

TOWN HALL

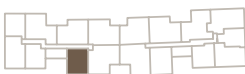
1 BEDROOM APARTMENT

Internal Area (NSA)	56.30 sq m / 605.99 sq ft
Living Area	4675 x 69735 mm
Master Bedroom	3090 x 4325 mm
Balcony	5.37 sq m / 57.80 sq ft

This unit can be adapted to a wheelchair unit if required.



2nd Floor
Apartments: AN 28



3rd Floor
Apartments: AN 36



Ground Floor
Apartments: AN 08



1st Floor
Apartments: AN 18



Floorplans are intended to give a general indication of the proposed floor layout and refer to approximate measurements only. All stated dimensions are measures from the arrow points and are subject to tolerances of +/-5%. You are strongly advised not to order any carpets, appliances or any other goods which depend on accurate dimension before carrying out a check measure within your reserved plot following build completion. Total apartment dimension are given in NSA (Net Sales Area).

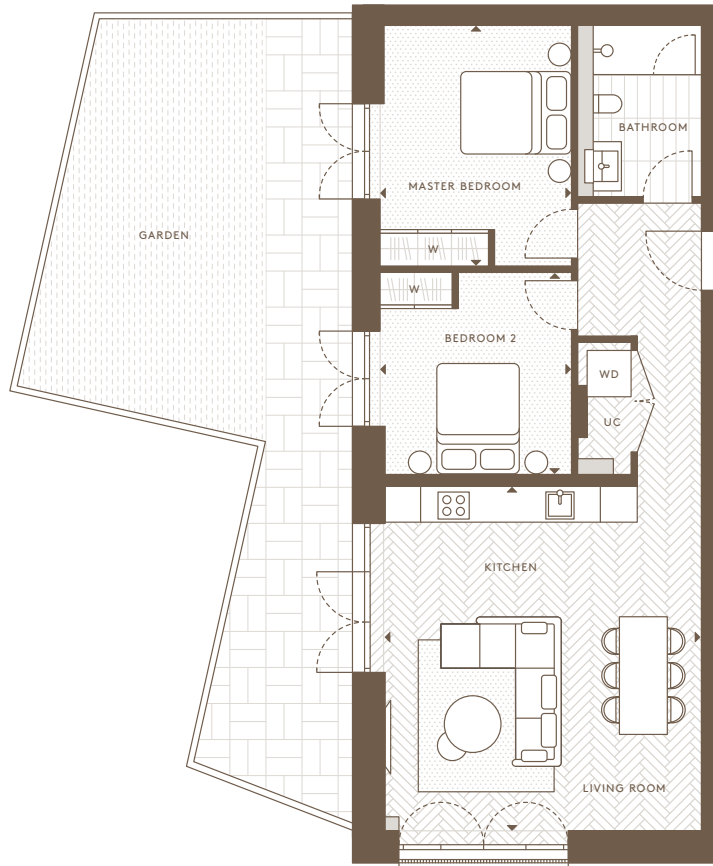


HORNSEY

TOWN HALL

2 BEDROOM APARTMENT

Internal Area (NSA)	70.32 sq m / 756.92 sq ft
Living Area	5245 x 5785 mm
Master Bedroom	3170 x 3995 mm
Bedroom 2	3170 x 3350 mm
Garden	45.76 sq m / 492.56 sq ft



Lower Ground Floor
Apartments: AN 09



Floorplans are intended to give a general indication of the proposed floor layout and refer to approximate measurements only. All stated dimensions are measures from the arrow points and are subject to tolerances of +/-5%. You are strongly advised not to order any carpets, appliances or any other goods which depend on accurate dimension before carrying out a check measure within your reserved plot following build completion. Total apartment dimension are given in NSA (Net Sales Area).

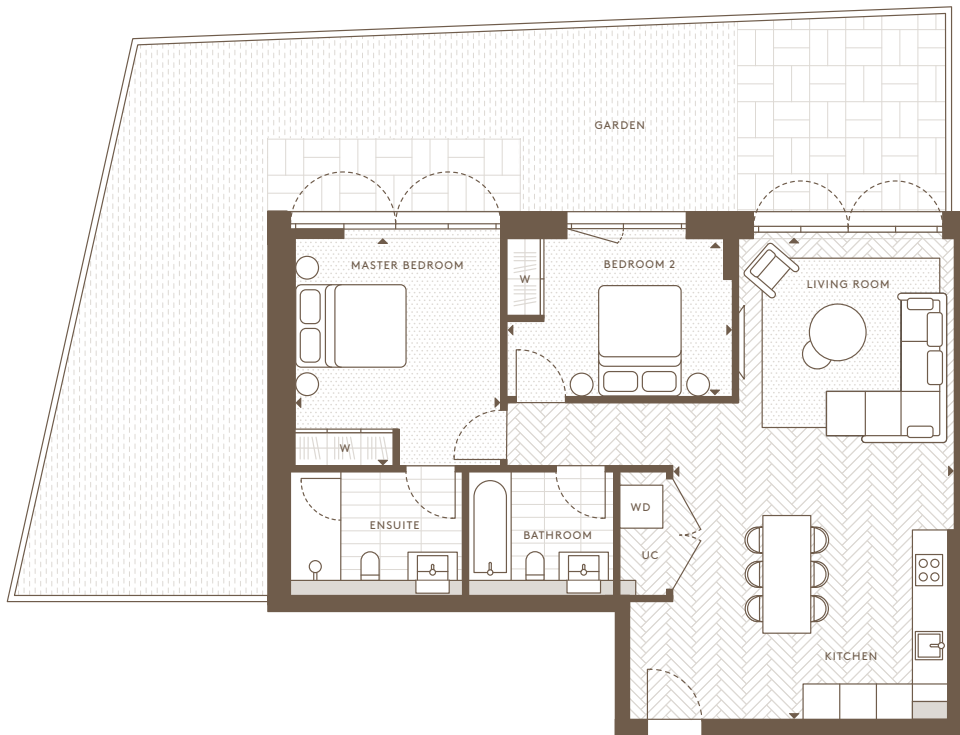


HORNSEY

TOWN HALL

2 BEDROOM APARTMENT

Internal Area (NSA)	75.55 sq m / 813.21 sq ft
Living Area	4665 x 7965 mm
Master Bedroom	3390 x 3765 mm
Bedroom 2	3720 x 2540 mm
Garden	62.31 sq m / 670.70 sq ft



Lower Ground Floor
Apartments: AN 10



Floorplans are intended to give a general indication of the proposed floor layout and refer to approximate measurements only. All stated dimensions are measures from the arrow points and are subject to tolerances of +/-5%. You are strongly advised not to order any carpets, appliances or any other goods which depend on accurate dimension before carrying out a check measure within your reserved plot following build completion. Total apartment dimension are given in NSA (Net Sales Area).

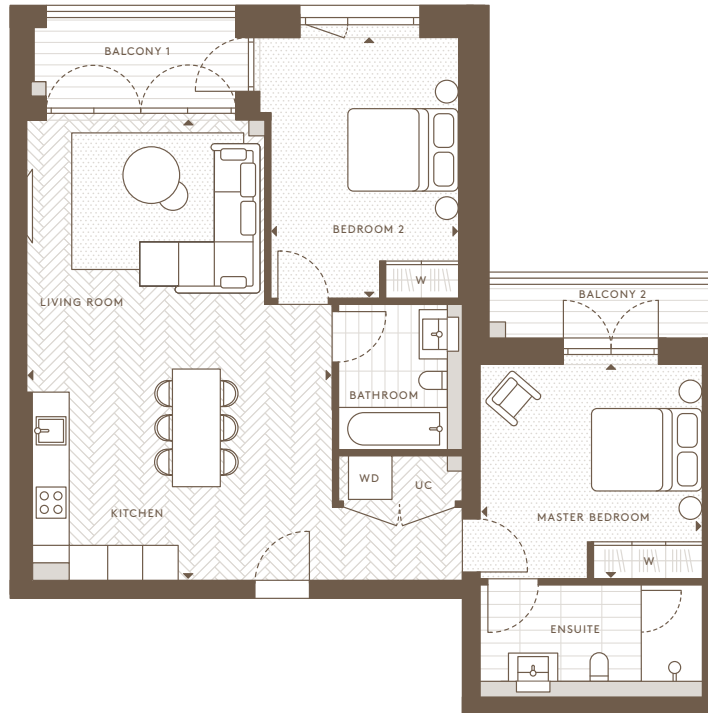


HORNSEY

TOWN HALL

2 BEDROOM APARTMENT

Internal Area (NSA)	80.46 sq m / 866.07 sq ft
Living Area	5060 x 7622 mm
Master Bedroom	3684 x 3545 mm
Bedroom 2	3105 x 4312 mm
Balcony 1	5.21 sq m / 55.96 sq ft
Balcony 2	3.48 sq m / 37.46 sq ft



1st Floor
Apartments: AN 14



2nd Floor
Apartments: AN 24



Floorplans are intended to give a general indication of the proposed floor layout and refer to approximate measurements only. All stated dimensions are measures from the arrow points and are subject to tolerances of +/-5%. You are strongly advised not to order any carpets, appliances or any other goods which depend on accurate dimension before carrying out a check measure within your reserved plot following build completion. Total apartment dimension are given in NSA (Net Sales Area).



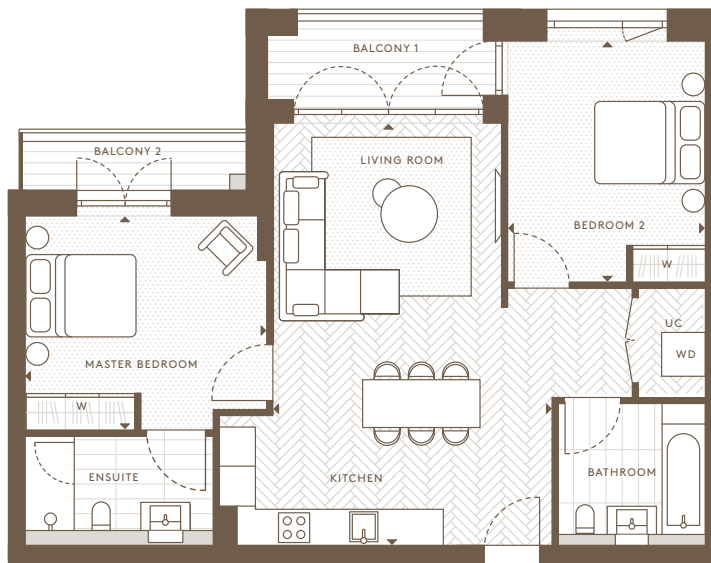
HORNSEY

TOWN HALL

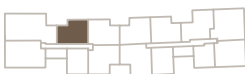
2 BEDROOM APARTMENT

Internal Area (NSA)	77.23 sq m / 831.27 sq ft
Living Area	4595 x 7030 mm
Master Bedroom	4005 x 3545 mm
Bedroom 2	3265 x 4075 mm
Balcony 1	5.47 sq m / 58.88 sq ft
Balcony 2	3.48 sq m / 37.46 sq ft

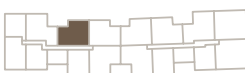
This unit can be adapted to a wheelchair unit if required.



3rd Floor
Apartments: AN 33



1st Floor
Apartments: AN 15



2nd Floor
Apartments: AN 25



Floorplans are intended to give a general indication of the proposed floor layout and refer to approximate measurements only. All stated dimensions are measures from the arrow points and are subject to tolerances of +/-5%. You are strongly advised not to order any carpets, appliances or any other goods which depend on accurate dimension before carrying out a check measure within your reserved plot following build completion. Total apartment dimension are given in NSA (Net Sales Area).

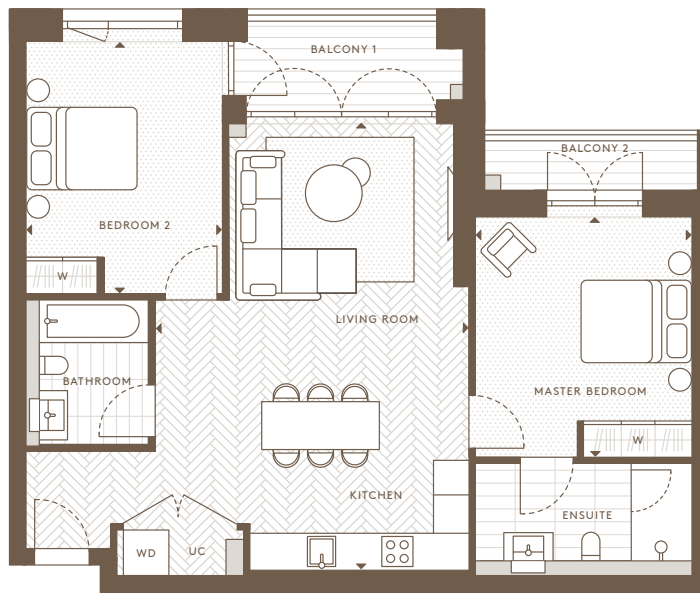


HORNSEY

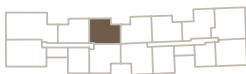
TOWN HALL

2 BEDROOM APARTMENT

Internal Area (NSA)	80.34 sq m / 864.72 sq ft
Living Area	5205 x 7383 mm
Master Bedroom	3582 x 3995 mm
Bedroom 2	3296 x 4187 mm
Balcony 1	5.47 sq m / 58.88 sq ft
Balcony 2	3.30 sq m / 35.52 sq ft



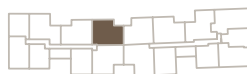
3rd Floor
Apartments: AN 34



1st Floor
Apartments: AN 16



2nd Floor
Apartments: AN 26



Floorplans are intended to give a general indication of the proposed floor layout and refer to approximate measurements only. All stated dimensions are measures from the arrow points and are subject to tolerances of +/-5%. You are strongly advised not to order any carpets, appliances or any other goods which depend on accurate dimension before carrying out a check measure within your reserved plot following build completion. Total apartment dimension are given in NSA (Net Sales Area).





HORNSEY

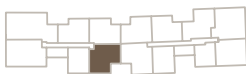
TOWN HALL

2 BEDROOM APARTMENT

Internal Area (NSA)	86.88 sq m / 935.13 sq ft
Living Area	4645 x 8858 mm
Master Bedroom	3762 x 3417 mm
Bedroom 2	2750 x 4948 mm
Balcony 1	5.47 sq m / 58.88 sq ft
Balcony 2	3.50 sq m / 37.67 sq ft



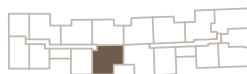
3rd Floor
Apartments: AN 35



1st Floor
Apartments: AN 17



2nd Floor
Apartments: AN 27



Floorplans are intended to give a general indication of the proposed floor layout and refer to approximate measurements only. All stated dimensions are measures from the arrow points and are subject to tolerances of +/-5%. You are strongly advised not to order any carpets, appliances or any other goods which depend on accurate dimension before carrying out a check measure within your reserved plot following build completion. Total apartment dimension are given in NSA (Net Sales Area).



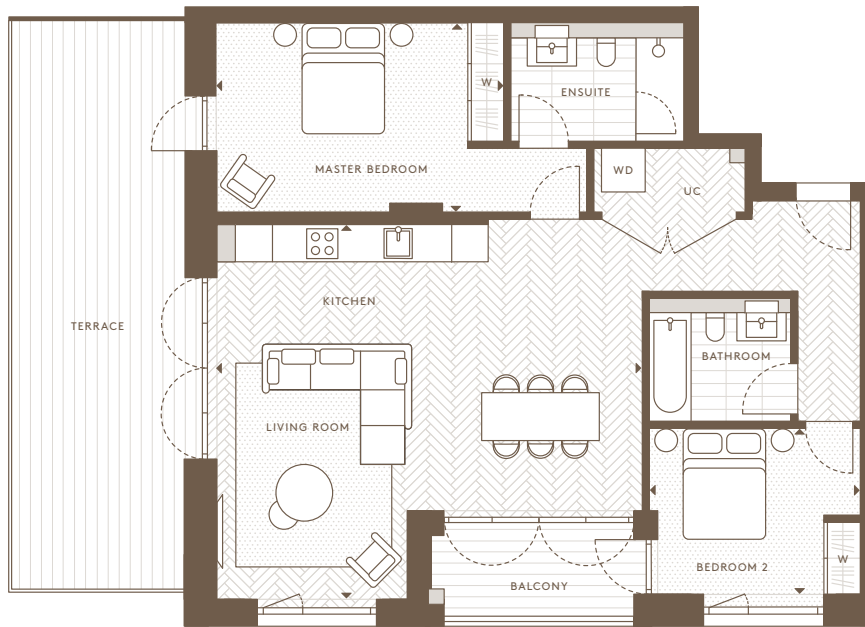


HORNSEY

TOWN HALL

2 BEDROOM APARTMENT

Internal Area (NSA)	87.50 sq m / 941.84 sq ft
Living Area	7050 x 6173 mm
Master Bedroom	4758 x 3150 mm
Bedroom 2	3500 x 2748 mm
Balcony	4.96 sq m / 53.39 sq ft
Terrace	28.53 sq m / 307.09 sq ft



3rd Floor
Apartments: AN 31



Floorplans are intended to give a general indication of the proposed floor layout and refer to approximate measurements only. All stated dimensions are measures from the arrow points and are subject to tolerances of +/-5%. You are strongly advised not to order any carpets, appliances or any other goods which depend on accurate dimension before carrying out a check measure within your reserved plot following build completion. Total apartment dimension are given in NSA (Net Sales Area).



HORNSEY

TOWN HALL

3 BEDROOM APARTMENT

Internal Area (NSA)	121.41 sq m / 1306.88 sq ft
Living Area	7039 x 8357 mm
Master Bedroom	3286 x 5427 mm
Bedroom 2	3839 x 2975 mm
Bedroom 3	3236 x 3277 mm
Balcony 1	5.20 sq m / 55.97 sq ft
Balcony 2	3.48 sq m / 37.46 sq ft
Terrace	29.78 sq m / 320.55 sq ft



3rd Floor
Apartments: AN 32



Floorplans are intended to give a general indication of the proposed floor layout and refer to approximate measurements only. All stated dimensions are measures from the arrow points and are subject to tolerances of +/-5%. You are strongly advised not to order any carpets, appliances or any other goods which depend on accurate dimension before carrying out a check measure within your reserved plot following build completion. Total apartment dimension are given in NSA (Net Sales Area).

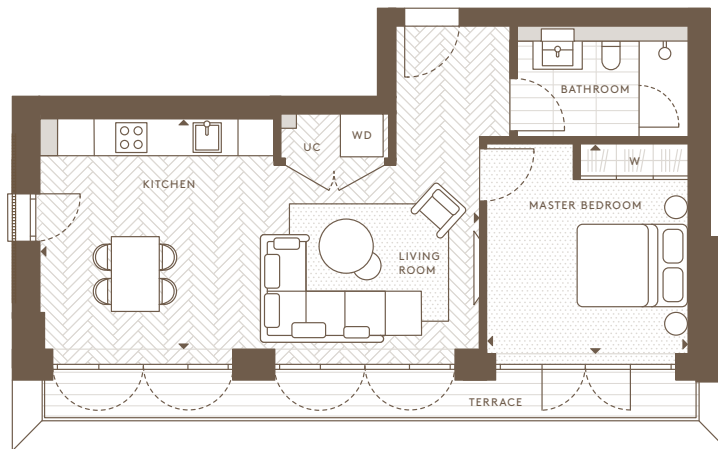


HORNSEY

TOWN HALL

1 BEDROOM APARTMENT

Internal Area (NSA)	49.58 sq m / 533.64 sq ft
Living Area	7275 x 3806 mm
Master Bedroom	3350 x 3479 mm
Terrace	8.68 sq m / 93.45 sq ft



4th Floor
Apartments: AN 41



Floorplans are intended to give a general indication of the proposed floor layout and refer to approximate measurements only. All stated dimensions are measures from the arrow points and are subject to tolerances of +/-5%. You are strongly advised not to order any carpets, appliances or any other goods which depend on accurate dimension before carrying out a check measure within your reserved plot following build completion. Total apartment dimension are given in NSA (Net Sales Area).

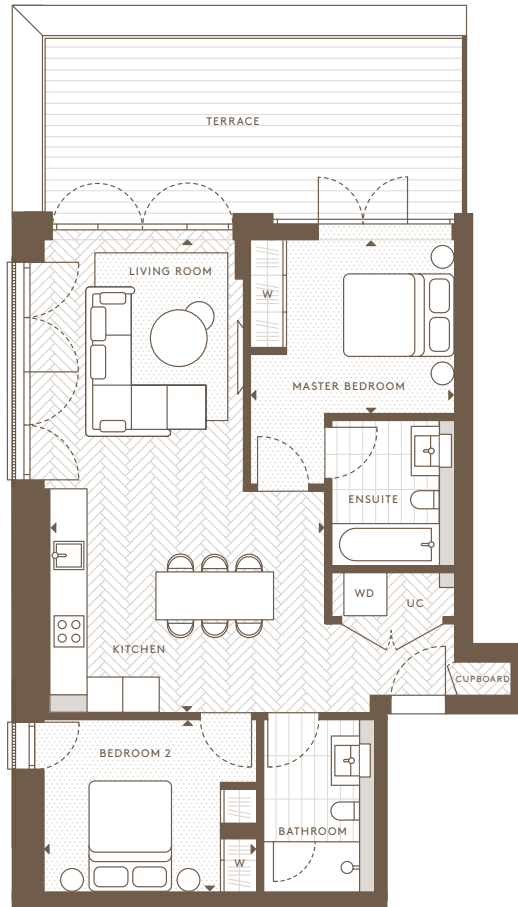


HORNSEY

TOWN HALL

2 BEDROOM APARTMENT

Internal Area (NSA)	69.70 sq m / 750.22 sq ft
Living Area	4551 x 7828 mm
Master Bedroom	3400 x 2896 mm
Bedroom 2	3521 x 2845 mm
Terrace	21.62 sq m / 232.69 sq ft



4th Floor
Apartments: AN 42



Floorplans are intended to give a general indication of the proposed floor layout and refer to approximate measurements only. All stated dimensions are measures from the arrow points and are subject to tolerances of +/-5%. You are strongly advised not to order any carpets, appliances or any other goods which depend on accurate dimension before carrying out a check measure within your reserved plot following build completion. Total apartment dimension are given in NSA (Net Sales Area).

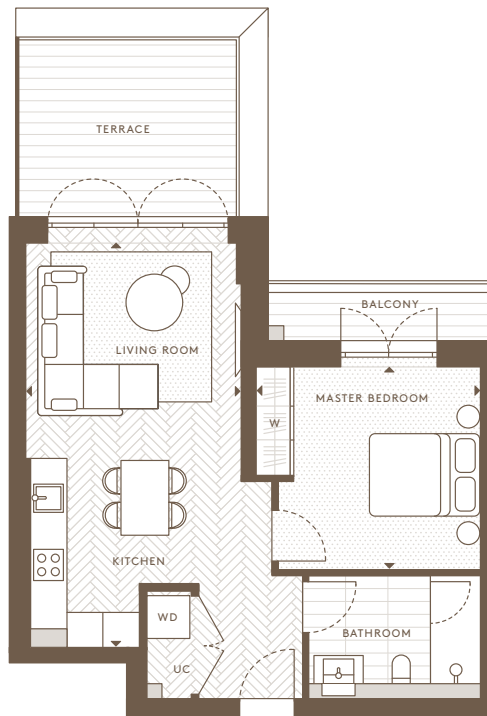


HORNSEY

TOWN HALL

1 BEDROOM APARTMENT

Internal Area (NSA)	47.00 sq m / 505.91 sq ft
Living Area	3596 x 6686 mm
Master Bedroom	3689 x 3345 mm
Balcony	3.50 sq m / 37.67 sq ft
Terrace	11.27 sq m / 121.31 sq ft



4th Floor
Apartments: AN 43



Floorplans are intended to give a general indication of the proposed floor layout and refer to approximate measurements only. All stated dimensions are measures from the arrow points and are subject to tolerances of +/-5%. You are strongly advised not to order any carpets, appliances or any other goods which depend on accurate dimension before carrying out a check measure within your reserved plot following build completion. Total apartment dimension are given in NSA (Net Sales Area).

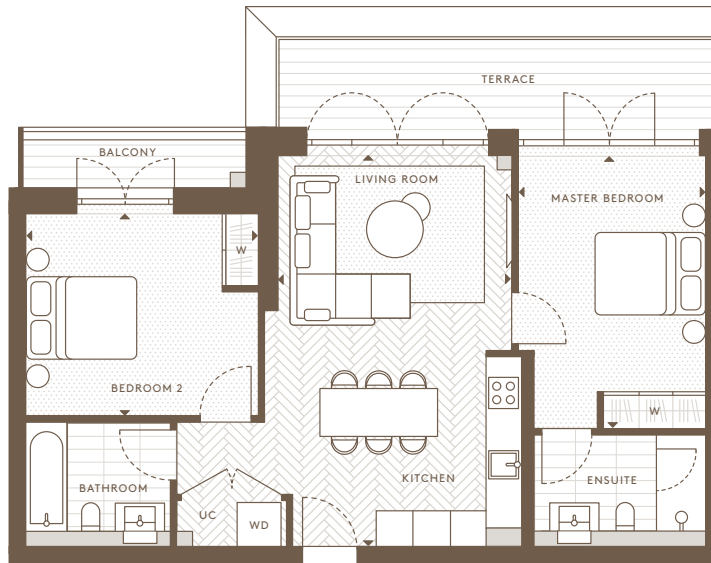


HORNSEY

TOWN HALL

2 BEDROOM APARTMENT

Internal Area (NSA)	68.70 sq m / 739.44 sq ft
Living Area	3900 x 6467 mm
Master Bedroom	3095 x 4517 mm
Bedroom 2	3856 x 3345 mm
Balcony	3.50 sq m / 37.67 sq ft
Terrace	12.11 sq m / 130.35 sq ft



4th Floor
Apartments: AN 44



Floorplans are intended to give a general indication of the proposed floor layout and refer to approximate measurements only. All stated dimensions are measures from the arrow points and are subject to tolerances of +-5%. You are strongly advised not to order any carpets, appliances or any other goods which depend on accurate dimension before carrying out a check measure within your reserved plot following build completion. Total apartment dimension are given in NSA (Net Sales Area).

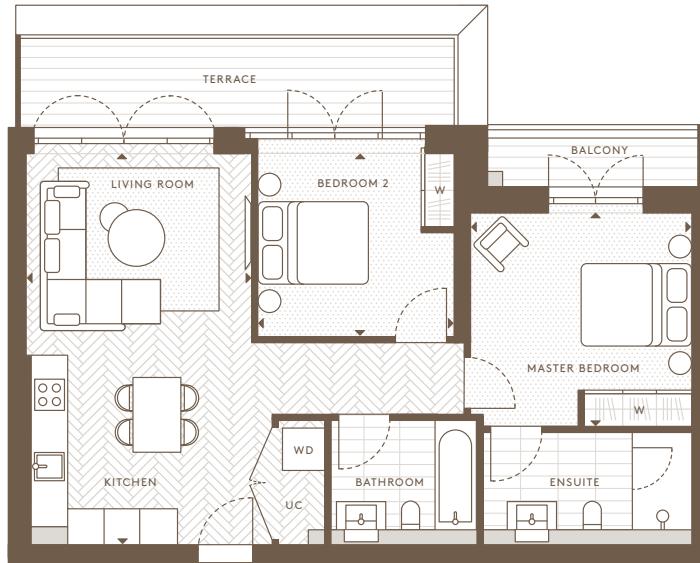


HORNSEY

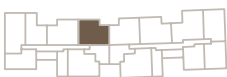
TOWN HALL

2 BEDROOM APARTMENT

Internal Area (NSA)	67.13 sq m / 722.58 sq ft
Living Area	3725 x 6467 mm
Master Bedroom	3687 x 3540 mm
Bedroom 2	3275 x 3017 mm
Balcony	3.30 sq m / 35.52 sq ft
Terrace	12.11 sq m / 130.35 sq ft



4th Floor
Apartments: AN 45



Floorplans are intended to give a general indication of the proposed floor layout and refer to approximate measurements only. All stated dimensions are measures from the arrow points and are subject to tolerances of +/-5%. You are strongly advised not to order any carpets, appliances or any other goods which depend on accurate dimension before carrying out a check measure within your reserved plot following build completion. Total apartment dimension are given in NSA (Net Sales Area).



HORNSEY

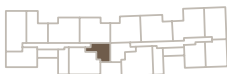
TOWN HALL

3 BEDROOM DUPLEX PENTHOUSE

Internal Area (NSA)	135.06 sq m / 1453.78 sq ft
Living Area	7160 x 5611 mm
Master Bedroom	3110 x 4000 mm
Bedroom 2	3876 x 2904 mm
Bedroom 3	3742 x 3322 mm
Balcony	3.50 sq m / 37.67 sq ft
Terrace	50.51 sq m / 543.72 sq ft



4th Floor
Apartments: AN 46



5th Floor
Apartments: AN 46



Floorplans are intended to give a general indication of the proposed floor layout and refer to approximate measurements only. All stated dimensions are measures from the arrow points and are subject to tolerances of +5%. You are strongly advised not to order any carpets, appliances or any other goods which depend on accurate dimension before carrying out a check measure within your reserved plot following build completion. Total apartment dimension are given in NSA (Net Sales Area).

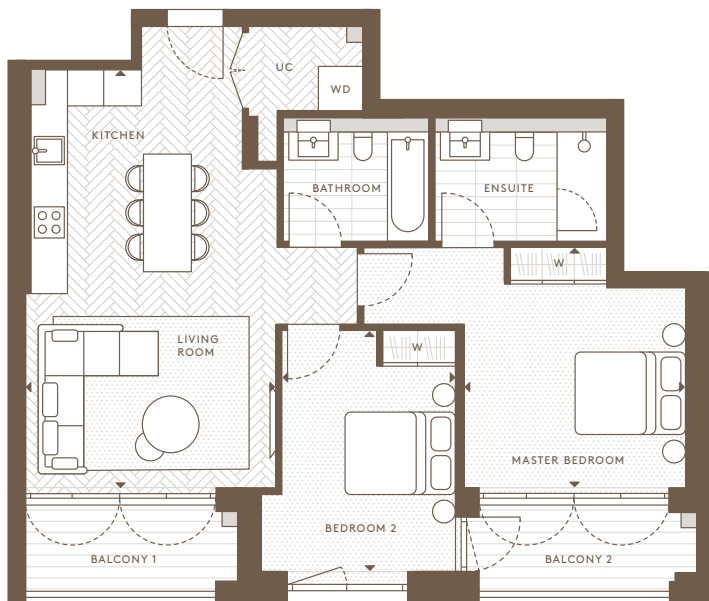


HORNSEY

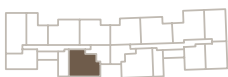
TOWN HALL

2 BEDROOM APARTMENT

Internal Area (NSA)	75.11 sq m / 808.47 sq ft
Living Area	4140 x 6923 mm
Master Bedroom	3708 x 3987 mm
Bedroom 2	2872 x 4980 mm
Balcony 1	5.18 sq m / 55.76 sq ft
Balcony 2	5.47 sq m / 58.88 sq ft



4th Floor
Apartments: AN 47



Floorplans are intended to give a general indication of the proposed floor layout and refer to approximate measurements only. All stated dimensions are measures from the arrow points and are subject to tolerances of +/-5%. You are strongly advised not to order any carpets, appliances or any other goods which depend on accurate dimension before carrying out a check measure within your reserved plot following build completion. Total apartment dimension are given in NSA (Net Sales Area).

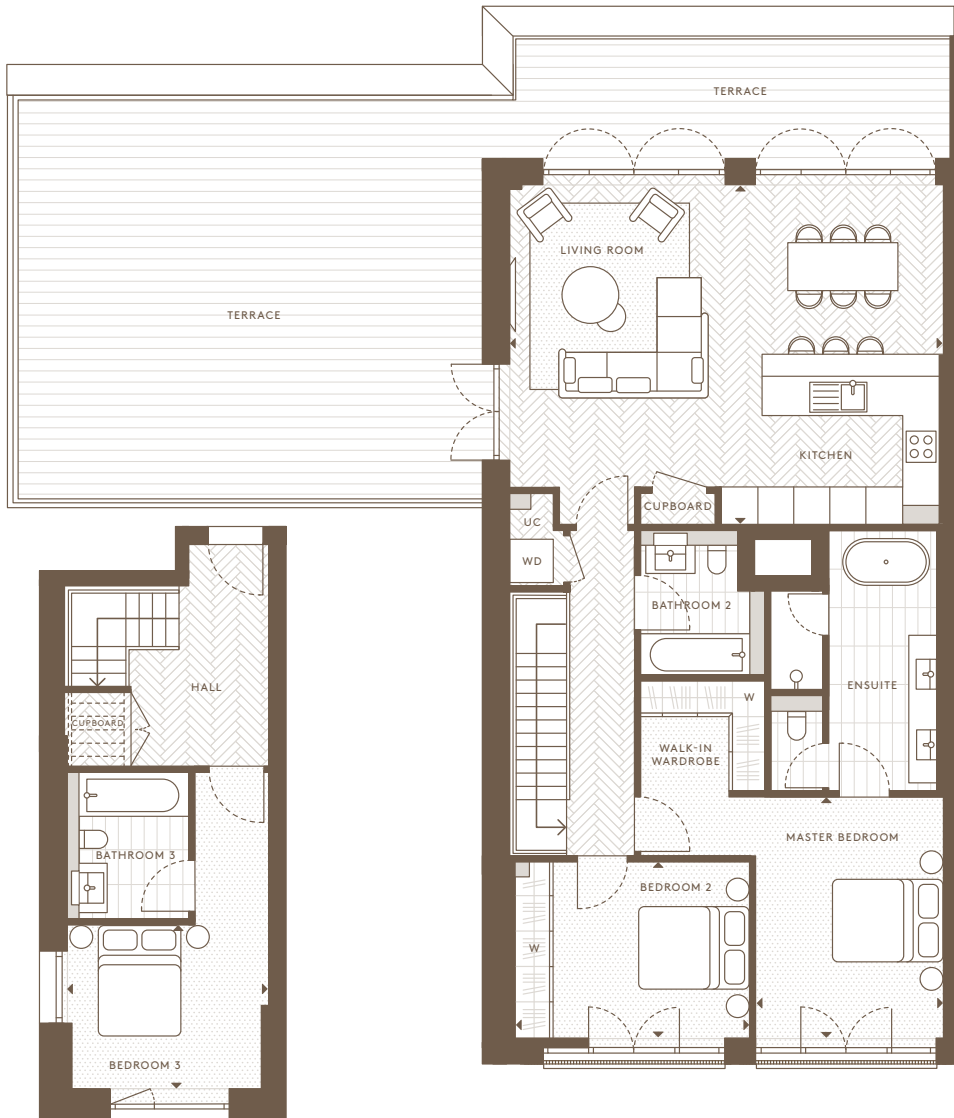


HORNSEY

TOWN HALL

3 BEDROOM DUPLEX PENTHOUSE

Internal Area (NSA)	124.90 sq m / 1344.40 sq ft
Living Area	7160 x 5611 mm
Master Bedroom	3110 x 4000 mm
Bedroom 2	3875 x 2904 mm
Bedroom 3	3330 x 2718 mm
Terrace	66.28 sq m / 735.01 sq ft



4th Floor
Apartments: AN 48



5th Floor
Apartments: AN 48



Floorplans are intended to give a general indication of the proposed floor layout and refer to approximate measurements only. All stated dimensions are measures from the arrow points and are subject to tolerances of +/-5%. You are strongly advised not to order any carpets, appliances or any other goods which depend on accurate dimension before carrying out a check measure within your reserved plot following build completion. Total apartment dimension are given in NSA (Net Sales Area).

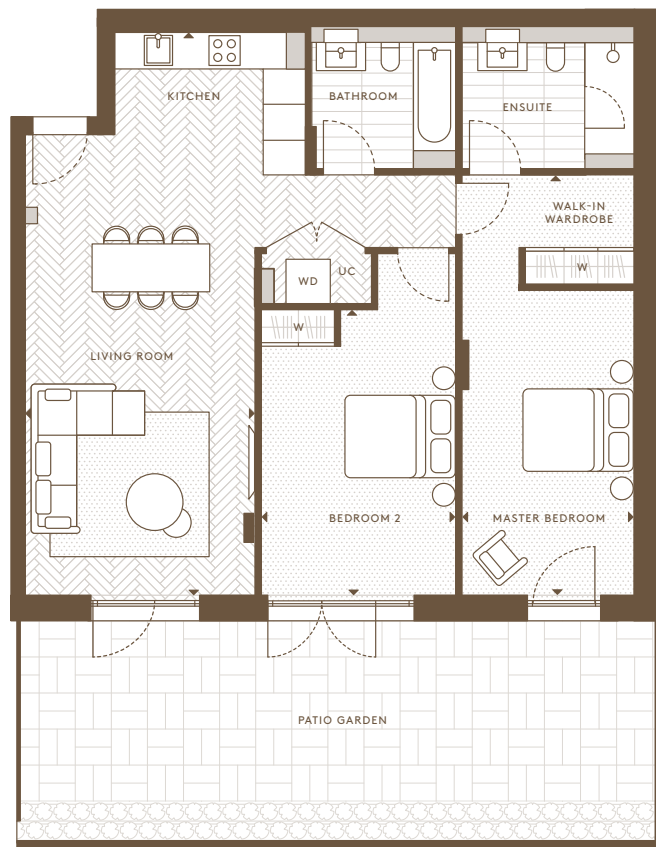


HORNSEY

TOWN HALL

2 BEDROOM APARTMENT

Internal Area (NSA)	92 sq m / 990.28 sq ft
Living Area	3817 x 9275 mm
Master Bedroom	2900 x 6875 mm
Bedroom 2	3152 x 4704 mm
Patio Garden	37.54 sq m / 404.08 sq ft



Lower Ground Floor
Apartments: B 01



Floorplans are intended to give a general indication of the proposed floor layout and refer to approximate measurements only. All stated dimensions are measures from the arrow points and are subject to tolerances of +/-5%. You are strongly advised not to order any carpets, appliances or any other goods which depend on accurate dimension before carrying out a check measure within your reserved plot following build completion. Total apartment dimension are given in NSA (Net Sales Area).

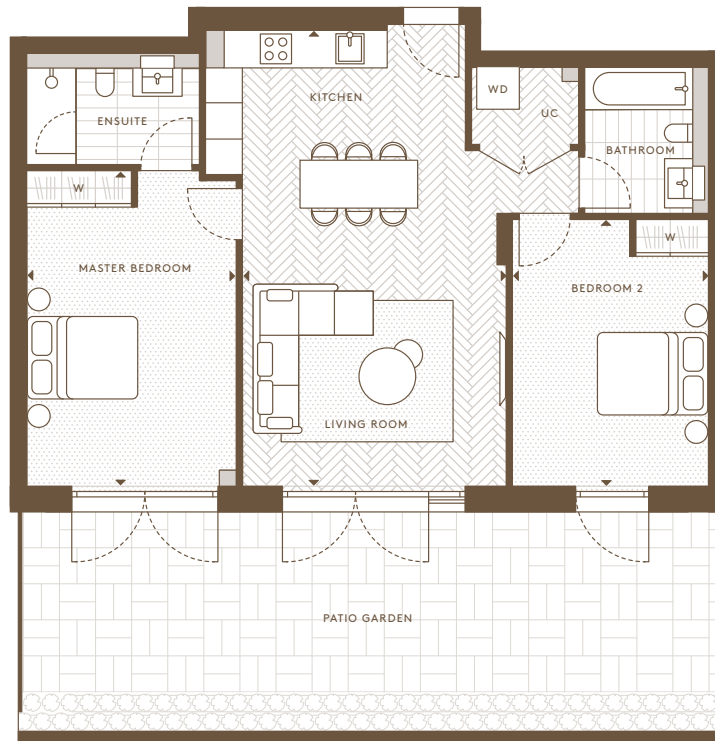


HORNSEY

TOWN HALL

2 BEDROOM APARTMENT

Internal Area (NSA)	81.65 sq m / 878.84 sq ft
Living Area	4364 x 7494 mm
Master Bedroom	3475 x 5209 mm
Bedroom 2	3245 x 4375 mm
Patio Garden	41.22 sq m / 443.69 sq ft



Lower Ground Floor
Apartments: B 02



Floorplans are intended to give a general indication of the proposed floor layout and refer to approximate measurements only. All stated dimensions are measures from the arrow points and are subject to tolerances of +-5%. You are strongly advised not to order any carpets, appliances or any other goods which depend on accurate dimension before carrying out a check measure within your reserved plot following build completion. Total apartment dimension are given in NSA (Net Sales Area).

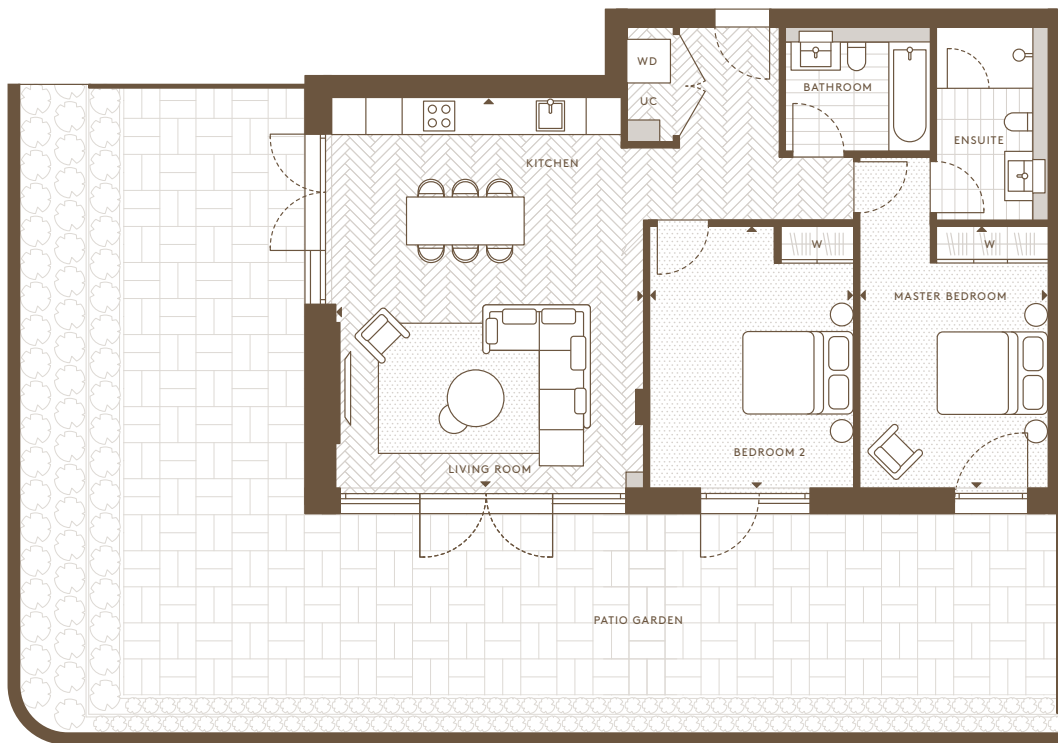


HORNSEY

TOWN HALL

2 BEDROOM APARTMENT

Internal Area (NSA)	84.95 sq m / 914.39 sq ft
Living Area	5085 x 6444 mm
Master Bedroom	3125 x 4294 mm
Bedroom 2	3375 x 4294 mm
Patio Garden	94.58 sq m / 1018.05 sq ft



Lower Ground Floor
Apartments: B 03



Floorplans are intended to give a general indication of the proposed floor layout and refer to approximate measurements only. All stated dimensions are measures from the arrow points and are subject to tolerances of +/-5%. You are strongly advised not to order any carpets, appliances or any other goods which depend on accurate dimension before carrying out a check measure within your reserved plot following build completion. Total apartment dimension are given in NSA (Net Sales Area).

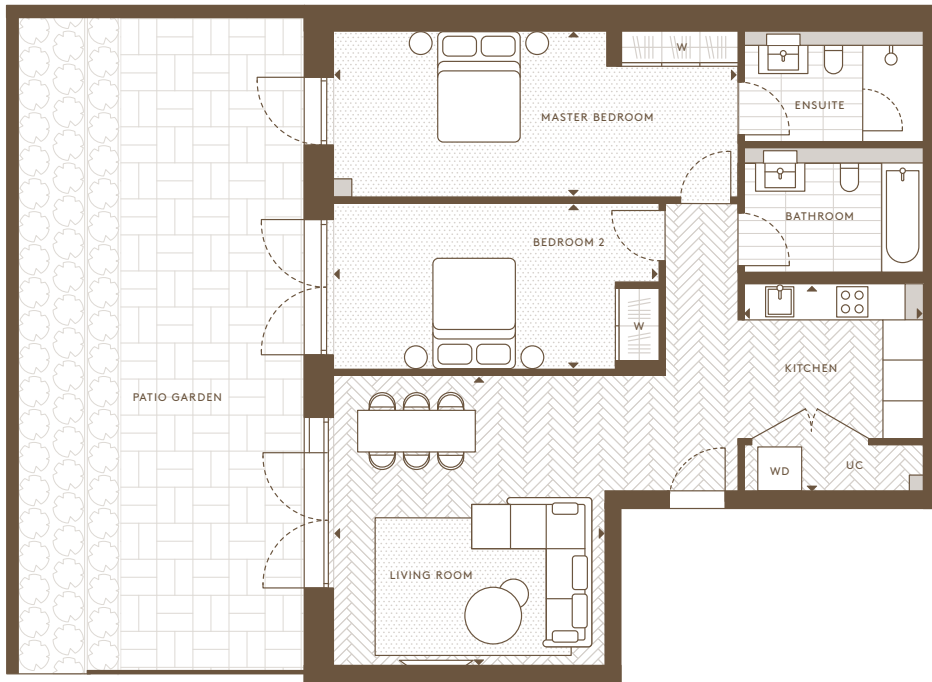


HORNSEY

TOWN HALL

2 BEDROOM APARTMENT

Internal Area (NSA)	87.18 sq m / 938.43 sq ft
Living Area	4480 x 4800 mm
Kitchen	3421 x 2975 mm
Master Bedroom	6673 x 2750 mm
Bedroom 2	5373 x 2750 mm
Patio Garden	51.19 sq m / 551.00 sq ft



Lower Ground Floor
Apartments: B 04



Floorplans are intended to give a general indication of the proposed floor layout and refer to approximate measurements only. All stated dimensions are measures from the arrow points and are subject to tolerances of +/-5%. You are strongly advised not to order any carpets, appliances or any other goods which depend on accurate dimension before carrying out a check measure within your reserved plot following build completion. Total apartment dimension are given in NSA (Net Sales Area).

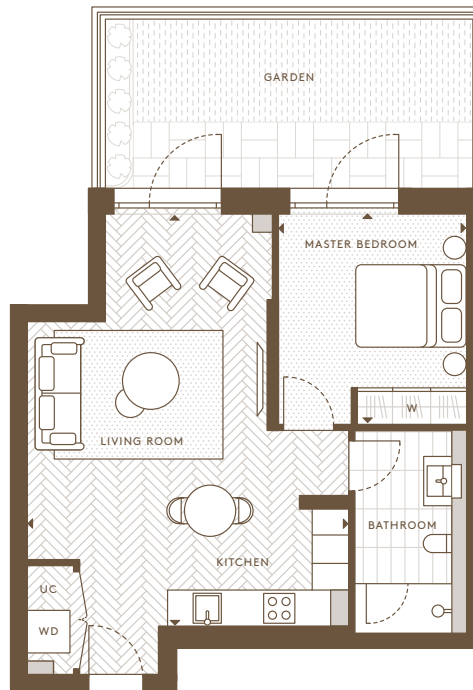


HORNSEY

TOWN HALL

1 BEDROOM APARTMENT

Internal Area (NSA)	49.68 sq m / 534.75 sq ft
Living Area	5327 x 6806 mm
Master Bedroom	3122 x 3476 mm
Garden	16.77 sq m / 180.51 sq ft



Ground Floor
Apartments: B 11



Floorplans are intended to give a general indication of the proposed floor layout and refer to approximate measurements only. All stated dimensions are measures from the arrow points and are subject to tolerances of +/-5%. You are strongly advised not to order any carpets, appliances or any other goods which depend on accurate dimension before carrying out a check measure within your reserved plot following build completion. Total apartment dimension are given in NSA (Net Sales Area).

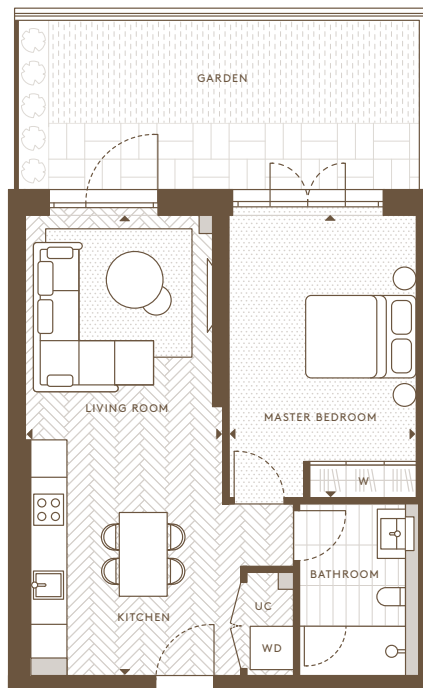


HORNSEY

TOWN HALL

1 BEDROOM APARTMENT

Internal Area (NSA)	49.74 sq m / 535.39 sq ft
Living Area	3263 x 7621 mm
Master Bedroom	3165 x 4676 mm
Garden	18.54 sq m / 199.56 sq ft



Ground Floor Apartments: B 12



Floorplans are intended to give a general indication of the proposed floor layout and refer to approximate measurements only. All stated dimensions are measures from the arrow points and are subject to tolerances of +/-5%. You are strongly advised not to order any carpets, appliances or any other goods which depend on accurate dimension before carrying out a check measure within your reserved plot following build completion. Total apartment dimension are given in NSA (Net Sales Area).

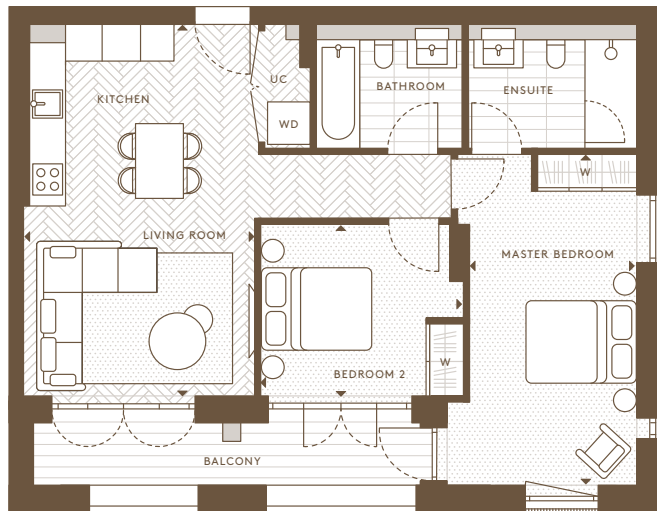


HORNSEY

TOWN HALL

2 BEDROOM APARTMENT

Internal Area (NSA)	66.74 sq m / 718.41 sq ft
Living Area	3819 x 6149 mm
Master Bedroom	2750 x 5444 mm
Bedroom 2	3350 x 2849 mm
Balcony	7.68 sq m / 82.72 sq ft



Ground Floor
Apartments: B 13



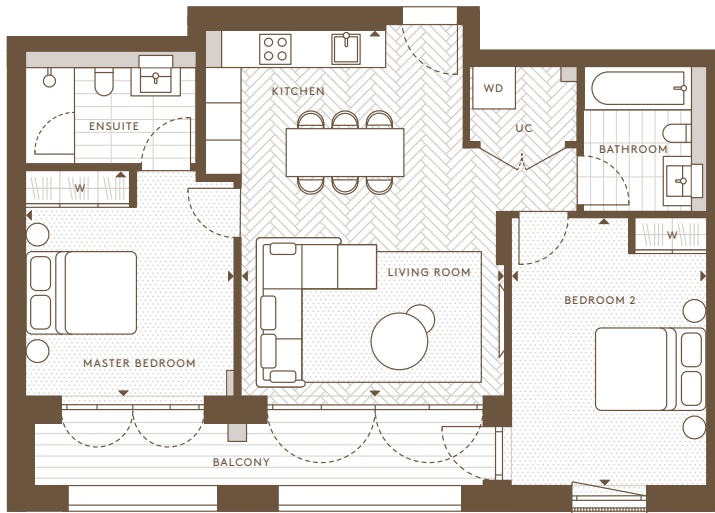
Floorplans are intended to give a general indication of the proposed floor layout and refer to approximate measurements only. All stated dimensions are measures from the arrow points and are subject to tolerances of +-5%. You are strongly advised not to order any carpets, appliances or any other goods which depend on accurate dimension before carrying out a check measure within your reserved plot following build completion. Total apartment dimension are given in NSA (Net Sales Area).



HORNSEY TOWN HALL

2 BEDROOM APARTMENT

Internal Area (NSA)	69.91 sq m / 752.52 sq ft
Living Area	4394 x 6049 mm
Master Bedroom	3445 x 3739 mm
Bedroom 2	3245 x 4404 mm
Balcony	9.07 sq m / 97.67 sq ft



4th Floor
Apartments: B 54



5th Floor
Apartments: B 64



2nd Floor
Apartments: B 34



3rd Floor
Apartments: B 44



Ground Floor
Apartments: B 14



1st Floor
Apartments: B 24



Floorplans are intended to give a general indication of the proposed floor layout and refer to approximate measurements only. All stated dimensions are measures from the arrow points and are subject to tolerances of +/-5%. You are strongly advised not to order any carpets, appliances or any other goods which depend on accurate dimension before carrying out a check measure within your reserved plot following build completion. Total apartment dimension are given in NSA (Net Sales Area).

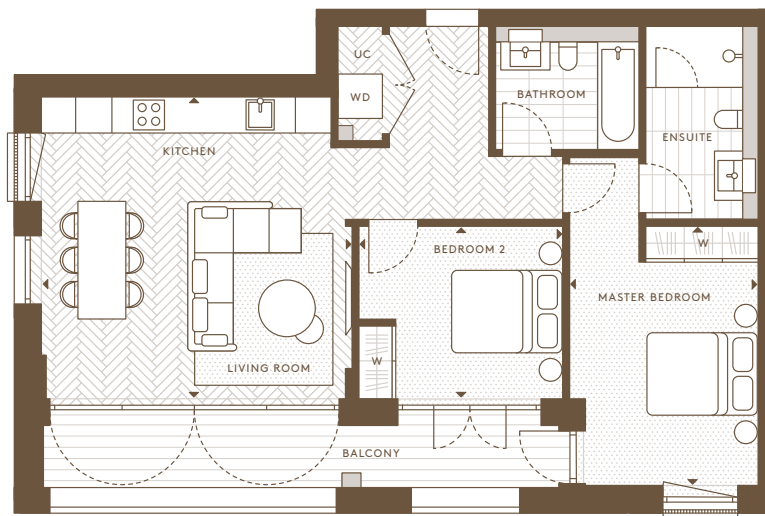


HORNSEY

TOWN HALL

2 BEDROOM APARTMENT

Internal Area (NSA)	71.62 sq m / 770.86 sq ft
Living Area	5162 x 4974 mm
Master Bedroom	3125 x 4294 mm
Bedroom 2	3375 x 2849 mm
Balcony	10.48 sq m / 112.80 sq ft



4th Floor
Apartments: B 55



Ground Floor
Apartments: B 15



2nd Floor
Apartments: B 35



Floorplans are intended to give a general indication of the proposed floor layout and refer to approximate measurements only. All stated dimensions are measures from the arrow points and are subject to tolerances of +/-5%. You are strongly advised not to order any carpets, appliances or any other goods which depend on accurate dimension before carrying out a check measure within your reserved plot following build completion. Total apartment dimension are given in NSA (Net Sales Area).

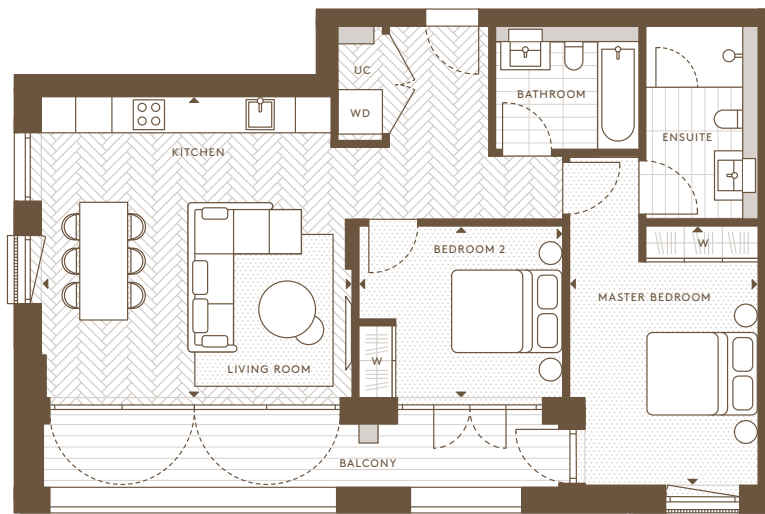


HORNSEY

TOWN HALL

2 BEDROOM APARTMENT

Internal Area (NSA)	71.72 sq m / 771.94 sq ft
Living Area	5162 x 4974 mm
Master Bedroom	3125 x 4294 mm
Bedroom 2	3375 x 2849 mm
Balcony	10.48 sq m / 112.80 sq ft



5th Floor
Apartments: B 65



1st Floor
Apartments: B 25



3rd Floor
Apartments: B 45



Floorplans are intended to give a general indication of the proposed floor layout and refer to approximate measurements only. All stated dimensions are measures from the arrow points and are subject to tolerances of +/-5%. You are strongly advised not to order any carpets, appliances or any other goods which depend on accurate dimension before carrying out a check measure within your reserved plot following build completion. Total apartment dimension are given in NSA (Net Sales Area).

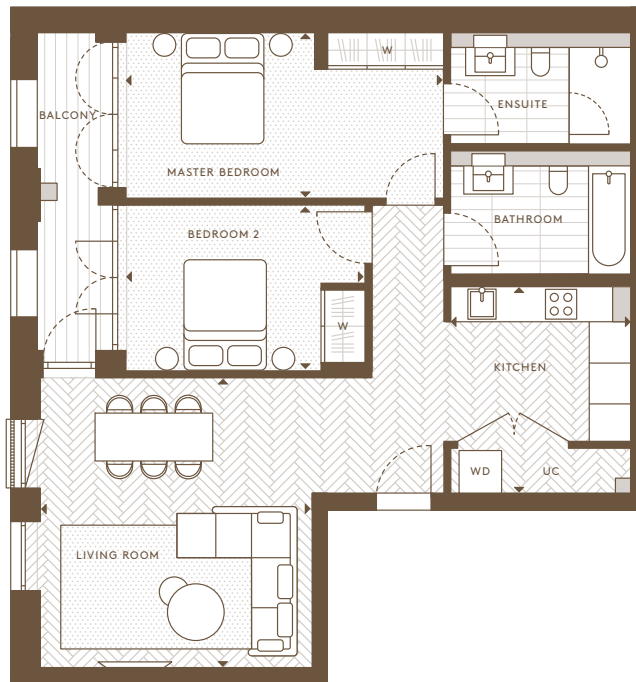


HORNSEY

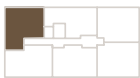
TOWN HALL

2 BEDROOM APARTMENT

Internal Area (NSA)	79.25 sq m / 853.03 sq ft
Living Area	4470 x 4800 mm
Kitchen	2975 x 3421 mm
Master Bedroom	5278 x 2750 mm
Bedroom 2	3978 x 2750 mm
Balcony	6.24 sq m / 67.14 sq ft



4th Floor
Apartments: B 56



Ground Floor
Apartments: B 16



2nd Floor
Apartments: B 36



Floorplans are intended to give a general indication of the proposed floor layout and refer to approximate measurements only. All stated dimensions are measures from the arrow points and are subject to tolerances of +/-5%. You are strongly advised not to order any carpets, appliances or any other goods which depend on accurate dimension before carrying out a check measure within your reserved plot following build completion. Total apartment dimension are given in NSA (Net Sales Area).

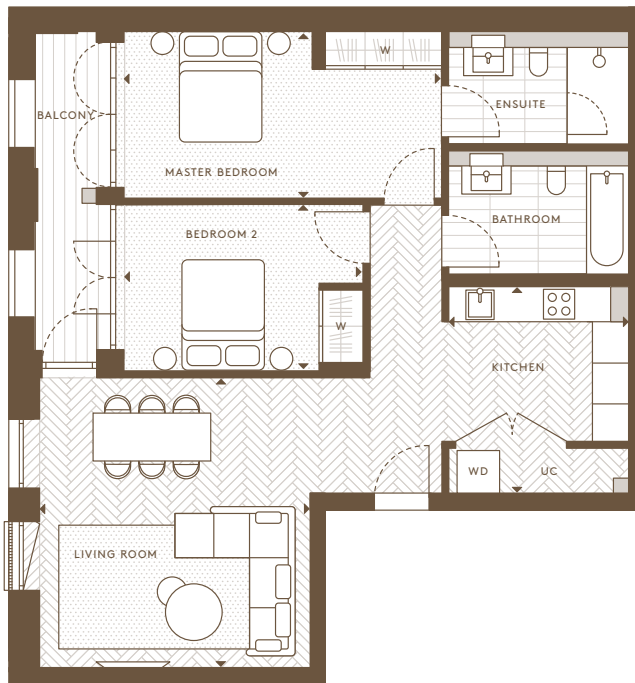


HORNSEY

TOWN HALL

2 BEDROOM APARTMENT

Internal Area (NSA)	79.18 sq m / 852.32 sq ft
Living Area	4470 x 4800 mm
Kitchen	2975 x 3421 mm
Master Bedroom	5278 x 2750 mm
Bedroom 2	3978 x 2750 mm
Balcony	6.24 sq m / 67.14 sq ft



5th Floor
Apartments: B 66



1st Floor
Apartments: B 26



3rd Floor
Apartments: B 46



Floorplans are intended to give a general indication of the proposed floor layout and refer to approximate measurements only. All stated dimensions are measures from the arrow points and are subject to tolerances of +/-5%. You are strongly advised not to order any carpets, appliances or any other goods which depend on accurate dimension before carrying out a check measure within your reserved plot following build completion. Total apartment dimension are given in NSA (Net Sales Area).

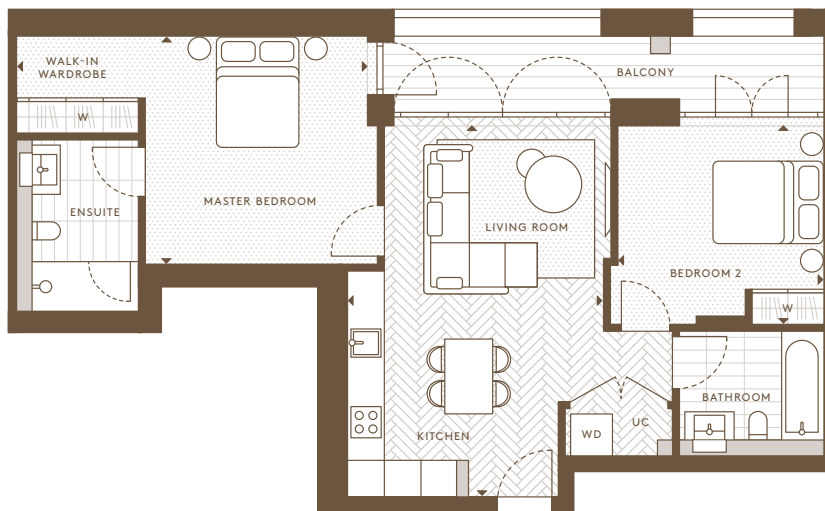


HORNSEY

TOWN HALL

2 BEDROOM APARTMENT

Internal Area (NSA)	68.27 sq m / 734.86 sq ft
Living Area	4237 x 6151 mm
Master Bedroom	5805 x 3745 mm
Bedroom 2	3419 x 3311 mm
Balcony	8.95 sq m / 96.32 sq ft



3rd Floor
Apartments: B 41



1st Floor
Apartments: B 21



2nd Floor
Apartments: B 31



Floorplans are intended to give a general indication of the proposed floor layout and refer to approximate measurements only. All stated dimensions are measures from the arrow points and are subject to tolerances of +/-5%. You are strongly advised not to order any carpets, appliances or any other goods which depend on accurate dimension before carrying out a check measure within your reserved plot following build completion. Total apartment dimension are given in NSA (Net Sales Area).

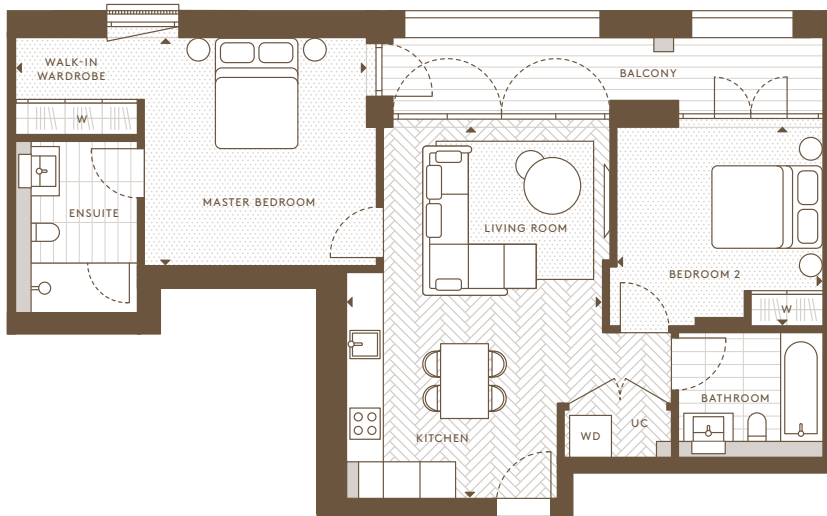


HORNSEY

TOWN HALL

2 BEDROOM APARTMENT

Internal Area (NSA)	68.27 sq m / 734.86 sq ft
Living Area	4237 x 6151 mm
Master Bedroom	5805 x 3745 mm
Bedroom 2	3419 x 3311 mm
Balcony	8.95 sq m / 96.32 sq ft



4th Floor
Apartments: B 51



5th Floor
Apartments: B 61



Floorplans are intended to give a general indication of the proposed floor layout and refer to approximate measurements only. All stated dimensions are measures from the arrow points and are subject to tolerances of +/-5%. You are strongly advised not to order any carpets, appliances or any other goods which depend on accurate dimension before carrying out a check measure within your reserved plot following build completion. Total apartment dimension are given in NSA (Net Sales Area).

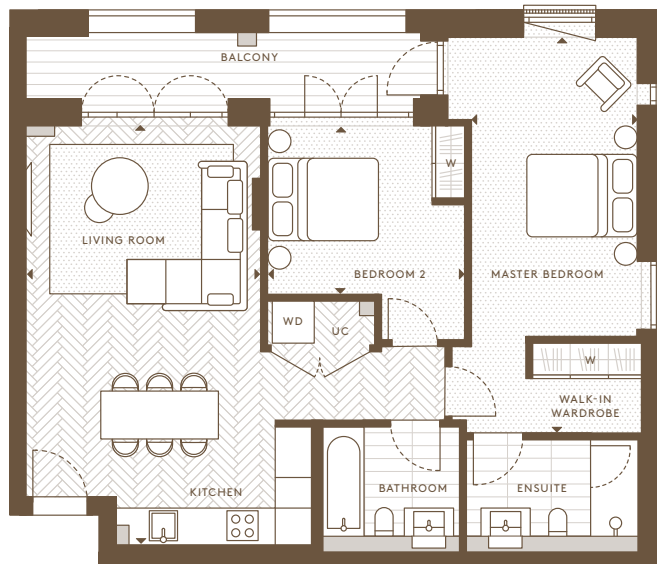


HORNSEY

TOWN HALL

2 BEDROOM APARTMENT

Internal Area (NSA)	74.79 sq m / 805.03 sq ft
Living Area	3864 x 6941 mm
Master Bedroom	2750 x 6536 mm
Bedroom 2	3275 x 2790 mm
Balcony	8.13 sq m / 87.49 sq ft



5th Floor
Apartments: B 62



3rd Floor
Apartments: B 42



4th Floor
Apartments: B 52



1st Floor
Apartments: B 22



2nd Floor
Apartments: B 32



Floorplans are intended to give a general indication of the proposed floor layout and refer to approximate measurements only. All stated dimensions are measures from the arrow points and are subject to tolerances of +/-5%. You are strongly advised not to order any carpets, appliances or any other goods which depend on accurate dimension before carrying out a check measure within your reserved plot following build completion. Total apartment dimension are given in NSA (Net Sales Area).

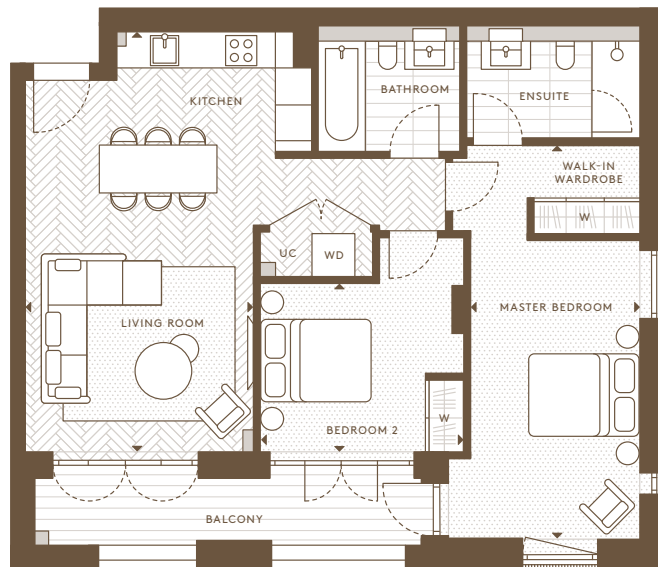


HORNSEY

TOWN HALL

2 BEDROOM APARTMENT

Internal Area (NSA)	74.78 sq m / 804.92 sq ft
Living Area	3774 x 6939 mm
Master Bedroom	2795 x 6529 mm
Bedroom 2	3350 x 2768 mm
Balcony	7.89 sq m / 84.89 sq ft



5th Floor
Apartments: B 63



3rd Floor
Apartments: B 43



4th Floor
Apartments: B 53



1st Floor
Apartments: B 23



2nd Floor
Apartments: B 33



Floorplans are intended to give a general indication of the proposed floor layout and refer to approximate measurements only. All stated dimensions are measures from the arrow points and are subject to tolerances of +/-5%. You are strongly advised not to order any carpets, appliances or any other goods which depend on accurate dimension before carrying out a check measure within your reserved plot following build completion. Total apartment dimension are given in NSA (Net Sales Area).

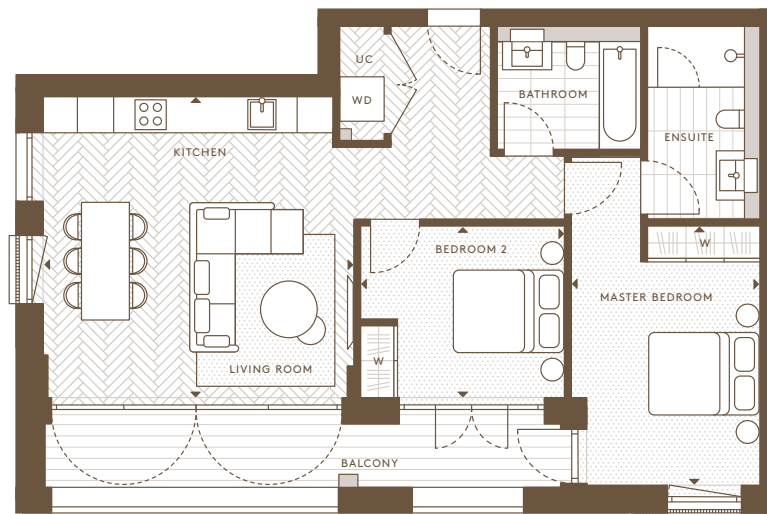


HORNSEY

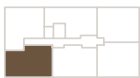
TOWN HALL

2 BEDROOM APARTMENT

Internal Area (NSA)	71.61 sq m / 770.80 sq ft
Living Area	5162 x 4974 mm
Master Bedroom	3125 x 4294 mm
Bedroom 2	3375 x 2849 mm
Balcony	10.48 sq m / 112.80 sq ft



5th Floor
Apartments: B 65



1st Floor
Apartments: B 25



3rd Floor
Apartments: B 45



Floorplans are intended to give a general indication of the proposed floor layout and refer to approximate measurements only. All stated dimensions are measures from the arrow points and are subject to tolerances of +/-5%. You are strongly advised not to order any carpets, appliances or any other goods which depend on accurate dimension before carrying out a check measure within your reserved plot following build completion. Total apartment dimension are given in NSA (Net Sales Area).

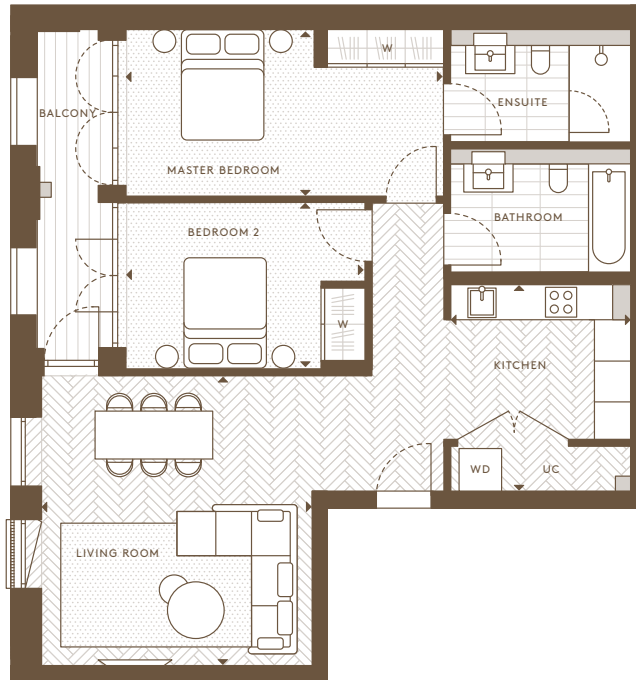


HORNSEY

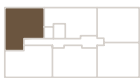
TOWN HALL

2 BEDROOM APARTMENT

Internal Area (NSA)	79.25 sq m / 853.03 sq ft
Living Area	4470 x 4800 mm
Kitchen	2975 x 3421 mm
Master Bedroom	5278 x 2750 mm
Bedroom 2	3978 x 2750 mm
Balcony	6.24 sq m / 67.14 sq ft



5th Floor
Apartments: B 66



1st Floor
Apartments: B 26



3rd Floor
Apartments: B 46



Floorplans are intended to give a general indication of the proposed floor layout and refer to approximate measurements only. All stated dimensions are measures from the arrow points and are subject to tolerances of +/-5%. You are strongly advised not to order any carpets, appliances or any other goods which depend on accurate dimension before carrying out a check measure within your reserved plot following build completion. Total apartment dimension are given in NSA (Net Sales Area).



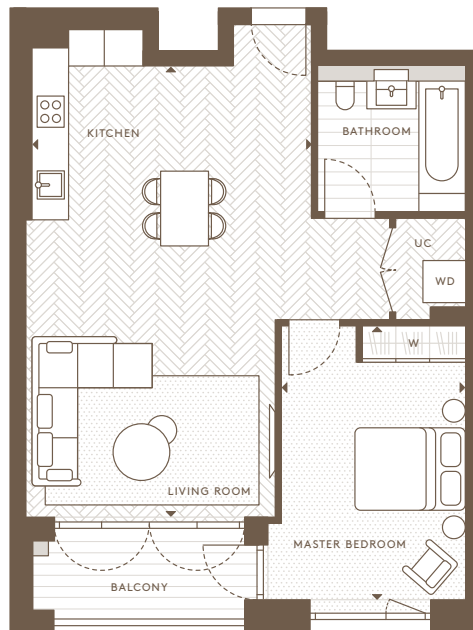
HORNSEY

TOWN HALL

1 BEDROOM APARTMENT

Internal Area (NSA)	60.90 sq m / 655.56 sq ft
Living Area	4720 x 7420 mm
Master Bedroom	3050 x 4610 mm
Balcony	5.37 sq m / 57.80 sq ft

This unit can be adapted to a wheelchair unit if required.



Ground Floor
Apartments: AS 01



Floorplans are intended to give a general indication of the proposed floor layout and refer to approximate measurements only. All stated dimensions are measures from the arrow points and are subject to tolerances of +/-5%. You are strongly advised not to order any carpets, appliances or any other goods which depend on accurate dimension before carrying out a check measure within your reserved plot following build completion. Total apartment dimension are given in NSA (Net Sales Area).



HORNSEY

TOWN HALL

2 BEDROOM APARTMENT

Internal Area (NSA)	92.69 sq m / 997.73 sq ft
Living Area	4527 x 9545 mm
Master Bedroom	4207 x 3633 mm
Bedroom 2	2900 x 4904 mm
Balcony	5.47 sq m / 58.88 sq ft
Terrace	18.77 sq m / 202.04 sq ft



Ground Floor
Apartments: AS 02



Floorplans are intended to give a general indication of the proposed floor layout and refer to approximate measurements only. All stated dimensions are measures from the arrow points and are subject to tolerances of +-5%. You are strongly advised not to order any carpets, appliances or any other goods which depend on accurate dimension before carrying out a check measure within your reserved plot following build completion. Total apartment dimension are given in NSA (Net Sales Area).

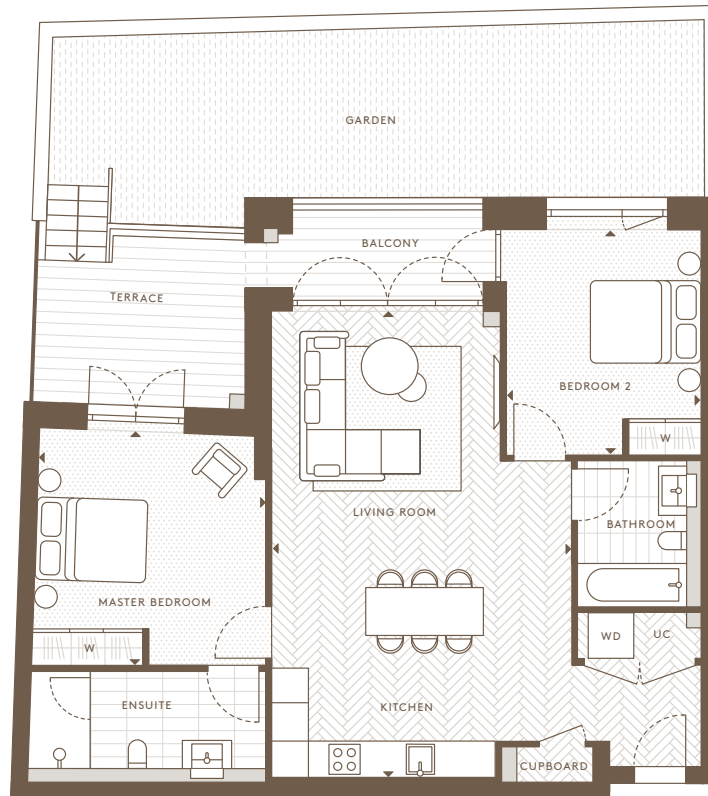


HORNSEY

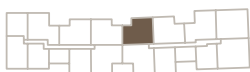
TOWN HALL

2 BEDROOM APARTMENT

Internal Area (NSA)	82.04 sq m / 883.07 sq ft
Living Area	4950 x 7693 mm
Master Bedroom	3835 x 3850 mm
Bedroom 2	3220 x 3733 mm
Balcony	5.47 sq m / 58.88 sq ft
Terrace	9.89 sq m / 106.45 sq ft
Garden	29.27 sq m / 315.06 sq ft



Ground Floor
Apartments: AS 03



Floorplans are intended to give a general indication of the proposed floor layout and refer to approximate measurements only. All stated dimensions are measures from the arrow points and are subject to tolerances of +/-5%. You are strongly advised not to order any carpets, appliances or any other goods which depend on accurate dimension before carrying out a check measure within your reserved plot following build completion. Total apartment dimension are given in NSA (Net Sales Area).



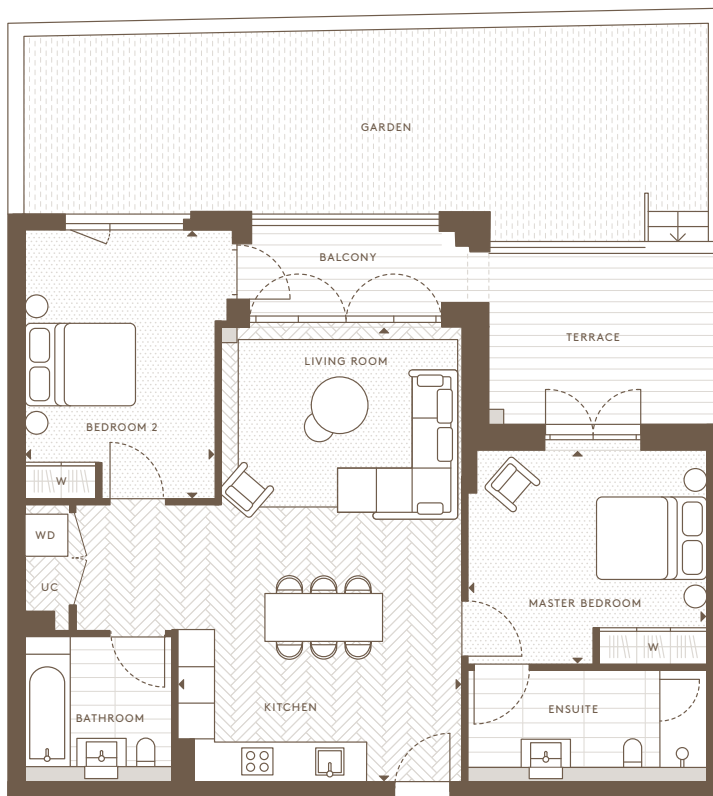
HORNSEY

TOWN HALL

2 BEDROOM APARTMENT

Internal Area (NSA)	81.10 sq m / 872.97 sq ft
Living Area	4670 x 7520 mm
Master Bedroom	3960 x 3535 mm
Bedroom 2	3150 x 4280 mm
Balcony	5.43 sq m / 58.45 sq ft
Terrace	10.68 sq m / 114.96 sq ft
Garden	33.56 sq m / 361.24 sq ft

This unit can be adapted to a wheelchair unit if required.



Ground Floor
Apartments: AS 04



Floorplans are intended to give a general indication of the proposed floor layout and refer to approximate measurements only. All stated dimensions are measures from the arrow points and are subject to tolerances of +/-5%. You are strongly advised not to order any carpets, appliances or any other goods which depend on accurate dimension before carrying out a check measure within your reserved plot following build completion. Total apartment dimension are given in NSA (Net Sales Area).



HORNSEY

TOWN HALL

2 BEDROOM APARTMENT

Internal Area (NSA)	89.58 sq m / 964.21 sq ft
Living Area	4931 x 8821 mm
Master Bedroom	4034 x 3535 mm
Bedroom 2	2900 x 5904 mm
Balcony	5.08 sq m / 54.67 sq ft
Terrace	10.68 sq m / 114.96 sq ft
Garden	11.66 sq m / 125.50 sq ft



Ground Floor
Apartments: AS 05



Floorplans are intended to give a general indication of the proposed floor layout and refer to approximate measurements only. All stated dimensions are measures from the arrow points and are subject to tolerances of +/-5%. You are strongly advised not to order any carpets, appliances or any other goods which depend on accurate dimension before carrying out a check measure within your reserved plot following build completion. Total apartment dimension are given in NSA (Net Sales Area).



HORNSEY

TOWN HALL

3 BEDROOM APARTMENT

Internal Area (NSA)	98.32 sq m / 1058.27 sq ft
Living Area	5900 x 6760 mm
Master Bedroom	6360 x 3057 mm
Bedroom 2	3150 x 4462 mm
Bedroom 3	2780 x 3245 mm
Balcony	10.08 sq m / 108.50 sq ft
Garden	40.62 sq m / 437.23 sq ft



Ground Floor
Apartments: AS 06



Floorplans are intended to give a general indication of the proposed floor layout and refer to approximate measurements only. All stated dimensions are measures from the arrow points and are subject to tolerances of +/-5%. You are strongly advised not to order any carpets, appliances or any other goods which depend on accurate dimension before carrying out a check measure within your reserved plot following build completion. Total apartment dimension are given in NSA (Net Sales Area).

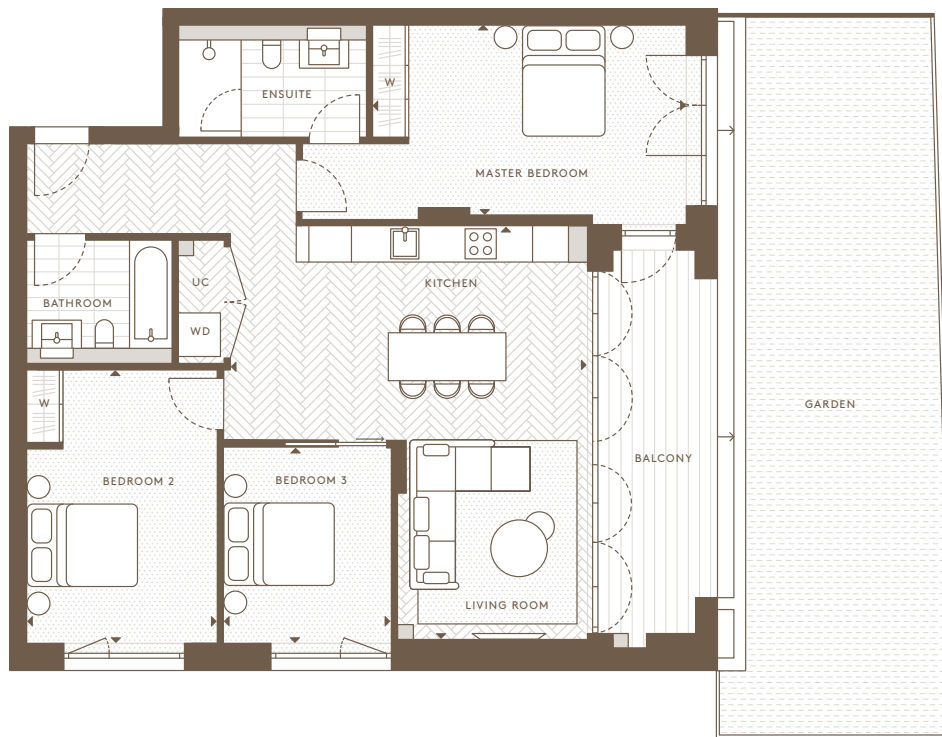


HORNSEY

TOWN HALL

3 BEDROOM APARTMENT

Internal Area (NSA)	95.05 sq m / 1023.08 sq ft
Living Area	5908 x 6841 mm
Master Bedroom	5175 x 3137 mm
Bedroom 2	3150 x 4528 mm
Bedroom 3	2780 x 3236 mm
Balcony	10.29 sq m / 110.73 sq ft
Garden	43.40 sq m / 467.15 sq ft



Ground Floor
Apartments: AS 07



Floorplans are intended to give a general indication of the proposed floor layout and refer to approximate measurements only. All stated dimensions are measures from the arrow points and are subject to tolerances of +/-5%. You are strongly advised not to order any carpets, appliances or any other goods which depend on accurate dimension before carrying out a check measure within your reserved plot following build completion. Total apartment dimension are given in NSA (Net Sales Area).

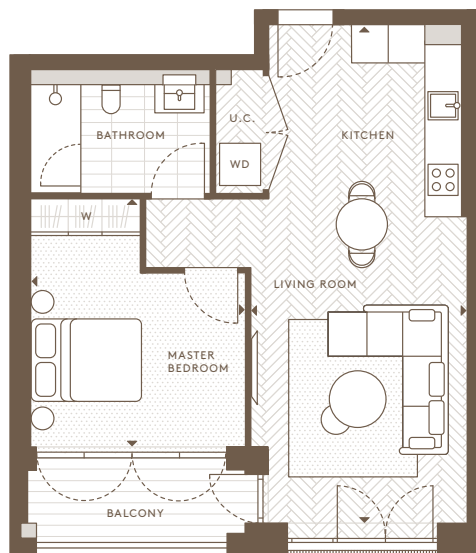


HORNSEY

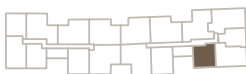
TOWN HALL

1 BEDROOM APARTMENT

Internal Area (NSA)	51.59 sq m / 555.31 sq ft
Living Area	3566 x 8200 mm
Master Bedroom	3540 x 4088 mm
Balcony	5.08 sq m / 54.67 sq ft



2nd Floor
Apartments: AS 29



3rd Floor
Apartments: AS 38



Ground Floor
Apartments: AS 08



1st Floor
Apartments: AS 18



Floorplans are intended to give a general indication of the proposed floor layout and refer to approximate measurements only. All stated dimensions are measures from the arrow points and are subject to tolerances of +/-5%. You are strongly advised not to order any carpets, appliances or any other goods which depend on accurate dimension before carrying out a check measure within your reserved plot following build completion. Total apartment dimension are given in NSA (Net Sales Area).



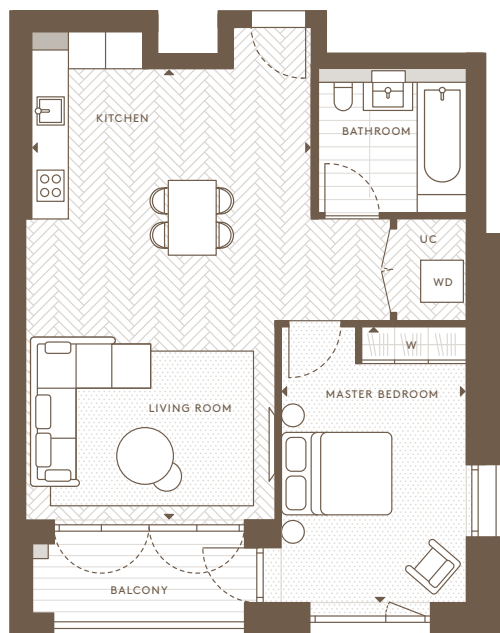
HORNSEY

TOWN HALL

1 BEDROOM APARTMENT

Internal Area (NSA)	60.90 sq m / 655.56 sq ft
Living Area	4720 x 7420 mm
Master Bedroom	3050 x 4610 mm
Balcony	5.37 sq m / 57.80 sq ft

This unit can be adapted to a wheelchair unit if required.



3rd Floor
Apartments: AS 31



1st Floor
Apartments: AS 11



2nd Floor
Apartments: AS 21



Floorplans are intended to give a general indication of the proposed floor layout and refer to approximate measurements only. All stated dimensions are measures from the arrow points and are subject to tolerances of +/-5%. You are strongly advised not to order any carpets, appliances or any other goods which depend on accurate dimension before carrying out a check measure within your reserved plot following build completion. Total apartment dimension are given in NSA (Net Sales Area).



HORNSEY

TOWN HALL

2 BEDROOM APARTMENT

Internal Area (NSA)	92.69 sq m / 997.73 sq ft
Living Area	4527 x 9545 mm
Master Bedroom	4207 x 3633 mm
Bedroom 2	2900 x 4904 mm
Balcony 1	5.47 sq m / 58.88 sq ft
Balcony 2	3.52 sq m / 37.89 sq ft



3rd Floor
Apartments: AS 32



1st Floor
Apartments: AS 12



2nd Floor
Apartments: AS 22



Floorplans are intended to give a general indication of the proposed floor layout and refer to approximate measurements only. All stated dimensions are measures from the arrow points and are subject to tolerances of +/-5%. You are strongly advised not to order any carpets, appliances or any other goods which depend on accurate dimension before carrying out a check measure within your reserved plot following build completion. Total apartment dimension are given in NSA (Net Sales Area).

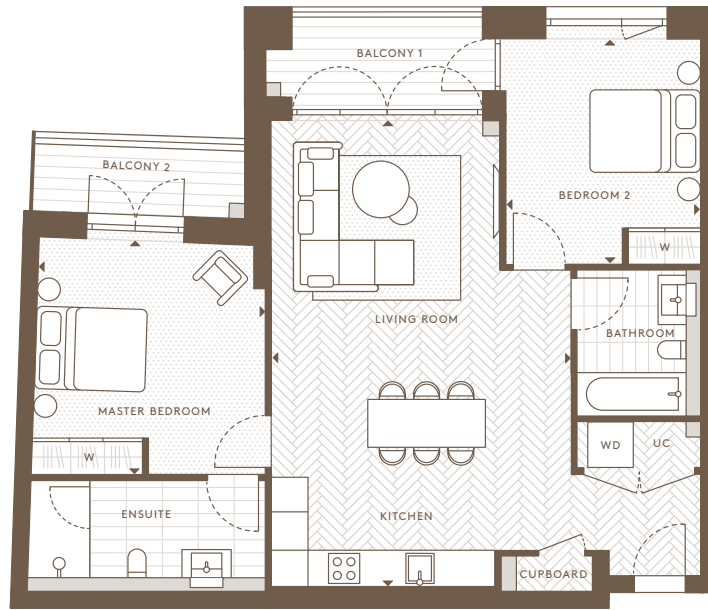


HORNSEY

TOWN HALL

2 BEDROOM APARTMENT

Internal Area (NSA)	82.04 sq m / 883.07 sq ft
Living Area	4950 x 7693 mm
Master Bedroom	3835 x 3850 mm
Bedroom 2	3220 x 3733 mm
Balcony 1	5.47 sq m / 58.88 sq ft
Balcony 2	3.29 sq m / 35.41 sq ft



3rd Floor
Apartments: AS 33



1st Floor
Apartments: AS 13



2nd Floor
Apartments: AS 23



Floorplans are intended to give a general indication of the proposed floor layout and refer to approximate measurements only. All stated dimensions are measures from the arrow points and are subject to tolerances of +/-5%. You are strongly advised not to order any carpets, appliances or any other goods which depend on accurate dimension before carrying out a check measure within your reserved plot following build completion. Total apartment dimension are given in NSA (Net Sales Area).





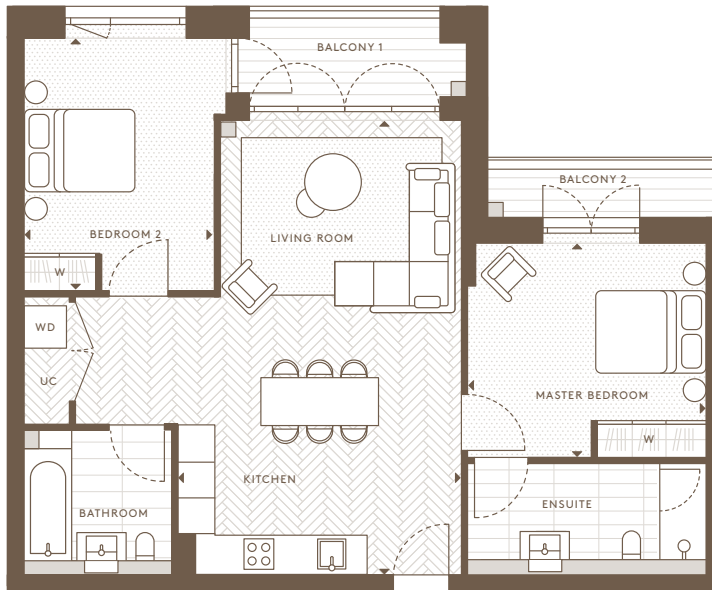
HORNSEY

TOWN HALL

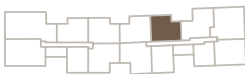
2 BEDROOM APARTMENT

Internal Area (NSA)	81.10 sq m / 872.97 sq ft
Living Area	4670 x 7520 mm
Master Bedroom	3960 x 3535 mm
Bedroom 2	3150 x 4280 mm
Balcony 1	5.43 sq m / 58.45 sq ft
Balcony 2	3.51 sq m / 37.78 sq ft

This unit can be adapted to a wheelchair unit if required.



3rd Floor
Apartments: AS 34



1st Floor
Apartments: AS 14



2nd Floor
Apartments: AS 24



Floorplans are intended to give a general indication of the proposed floor layout and refer to approximate measurements only. All stated dimensions are measures from the arrow points and are subject to tolerances of +/-5%. You are strongly advised not to order any carpets, appliances or any other goods which depend on accurate dimension before carrying out a check measure within your reserved plot following build completion. Total apartment dimension are given in NSA (Net Sales Area).



HORNSEY

TOWN HALL

2 BEDROOM APARTMENT

Internal Area (NSA)	89.95 sq m / 968.21 sq ft
Living Area	4931 x 8821 mm
Master Bedroom	4034 x 3535 mm
Bedroom 2	2900 x 5904 mm
Balcony 1	5.08 sq m / 54.67 sq ft
Balcony 2	3.51 sq m / 37.78 sq ft



1st Floor
Apartments: AS 15



Floorplans are intended to give a general indication of the proposed floor layout and refer to approximate measurements only. All stated dimensions are measures from the arrow points and are subject to tolerances of +/-5%. You are strongly advised not to order any carpets, appliances or any other goods which depend on accurate dimension before carrying out a check measure within your reserved plot following build completion. Total apartment dimension are given in NSA (Net Sales Area).

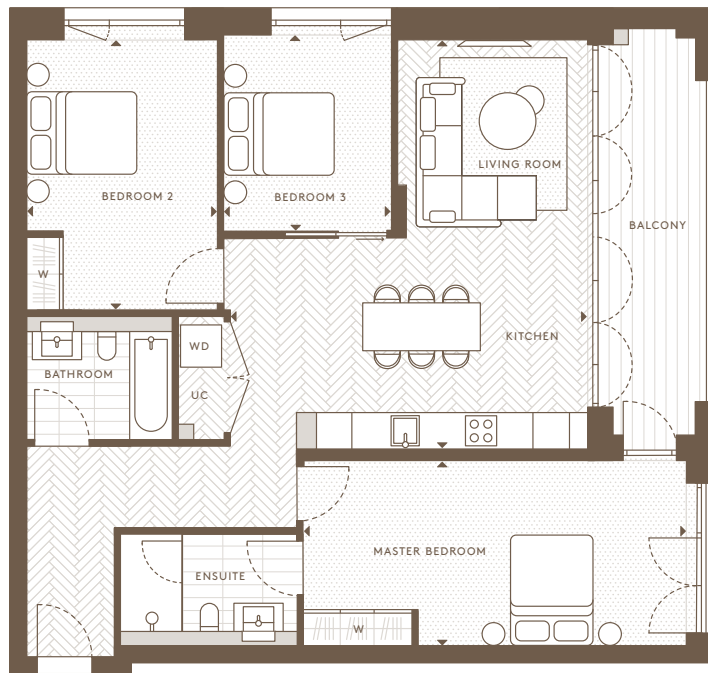


HORNSEY

TOWN HALL

3 BEDROOM APARTMENT

Internal Area (NSA)	98.32 sq m / 1058.27 sq ft
Living Area	5900 x 6760 mm
Master Bedroom	6360 x 3057 mm
Bedroom 2	3150 x 4462 mm
Bedroom 3	2780 x 3245 mm
Balcony	10.08 sq m / 108.50 sq ft



1st Floor
Apartments: AS 16



Floorplans are intended to give a general indication of the proposed floor layout and refer to approximate measurements only. All stated dimensions are measures from the arrow points and are subject to tolerances of +-5%. You are strongly advised not to order any carpets, appliances or any other goods which depend on accurate dimension before carrying out a check measure within your reserved plot following build completion. Total apartment dimension are given in NSA (Net Sales Area).

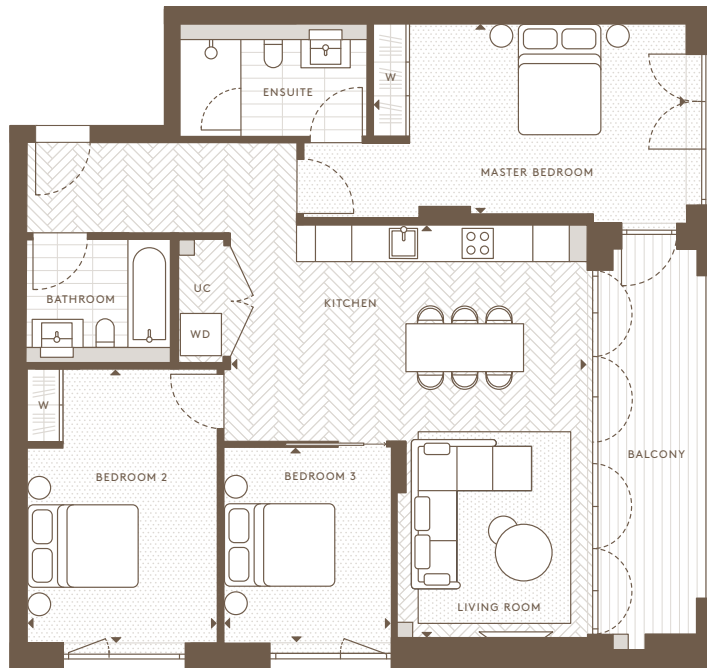


HORNSEY

TOWN HALL

3 BEDROOM APARTMENT

Internal Area (NSA)	95.05 sq m / 1023.08 sq ft
Living Area	5908 x 6841 mm
Master Bedroom	5175 x 3137 mm
Bedroom 2	3150 x 4528 mm
Bedroom 3	2780 x 3236 mm
Balcony	10.29 sq m / 110.73 sq ft



1st Floor
Apartments: AS 17



Floorplans are intended to give a general indication of the proposed floor layout and refer to approximate measurements only. All stated dimensions are measures from the arrow points and are subject to tolerances of +-5%. You are strongly advised not to order any carpets, appliances or any other goods which depend on accurate dimension before carrying out a check measure within your reserved plot following build completion. Total apartment dimension are given in NSA (Net Sales Area).



HORNSEY

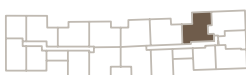
TOWN HALL

2 BEDROOM APARTMENT

Internal Area (NSA)	79.86 sq m / 859.64 sq ft
Living Area	4988 x 8821 mm
Master Bedroom	4034 x 3535 mm
Bedroom 2	2750 x 4455 mm
Balcony 1	4.73 sq m / 50.91 sq ft
Balcony 2	3.51 sq m / 37.78 sq ft



2nd Floor
Apartments: AS 25



Floorplans are intended to give a general indication of the proposed floor layout and refer to approximate measurements only. All stated dimensions are measures from the arrow points and are subject to tolerances of +/-5%. You are strongly advised not to order any carpets, appliances or any other goods which depend on accurate dimension before carrying out a check measure within your reserved plot following build completion. Total apartment dimension are given in NSA (Net Sales Area).



HORNSEY

TOWN HALL

2 BEDROOM APARTMENT

Internal Area (NSA)	75.79 sq m / 815.79 sq ft
Living Area	5460 x 6455 mm
Master Bedroom	3665 x 3408 mm
Bedroom 2	2790 x 3484 mm
Balcony	10.30 sq m / 110.88 sq ft



2nd Floor
Apartments: AS 26



Floorplans are intended to give a general indication of the proposed floor layout and refer to approximate measurements only. All stated dimensions are measures from the arrow points and are subject to tolerances of +/-5%. You are strongly advised not to order any carpets, appliances or any other goods which depend on accurate dimension before carrying out a check measure within your reserved plot following build completion. Total apartment dimension are given in NSA (Net Sales Area).



HORNSEY

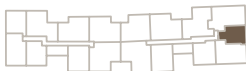
TOWN HALL

STUDIO APARTMENT

Internal Area (NSA)	51.20 sq m / 551.12 sq ft
Living Area	6925 x 3560 mm
Master Bedroom	4623 x 2900 mm



2nd Floor
Apartments: AS 27



Floorplans are intended to give a general indication of the proposed floor layout and refer to approximate measurements only. All stated dimensions are measures from the arrow points and are subject to tolerances of +-5%. You are strongly advised not to order any carpets, appliances or any other goods which depend on accurate dimension before carrying out a check measure within your reserved plot following build completion. Total apartment dimension are given in NSA (Net Sales Area).

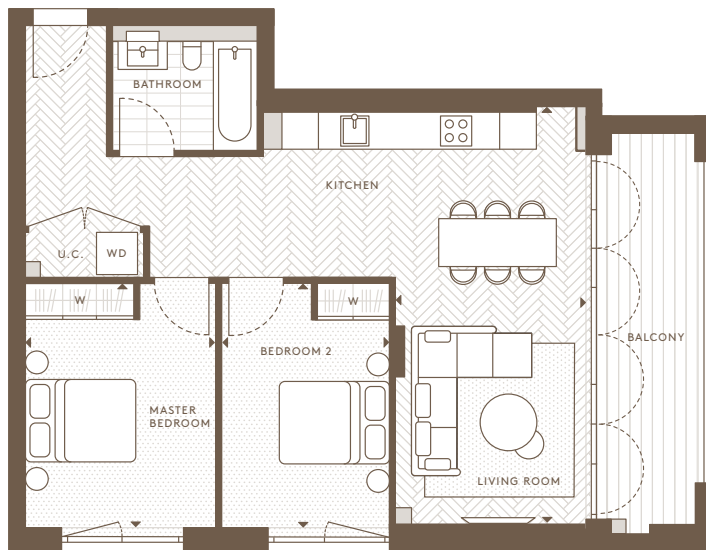


HORNSEY

TOWN HALL

2 BEDROOM APARTMENT

Internal Area (NSA)	69.30 sq m / 745.97 sq ft
Living Area	3138 x 6876 mm
Master Bedroom	3175 x 4033 mm
Bedroom 2	2780 x 4033 mm
Balcony	10.29 sq m / 110.73 sq ft



2nd Floor
Apartments: AS 28



Floorplans are intended to give a general indication of the proposed floor layout and refer to approximate measurements only. All stated dimensions are measures from the arrow points and are subject to tolerances of +/-5%. You are strongly advised not to order any carpets, appliances or any other goods which depend on accurate dimension before carrying out a check measure within your reserved plot following build completion. Total apartment dimension are given in NSA (Net Sales Area).

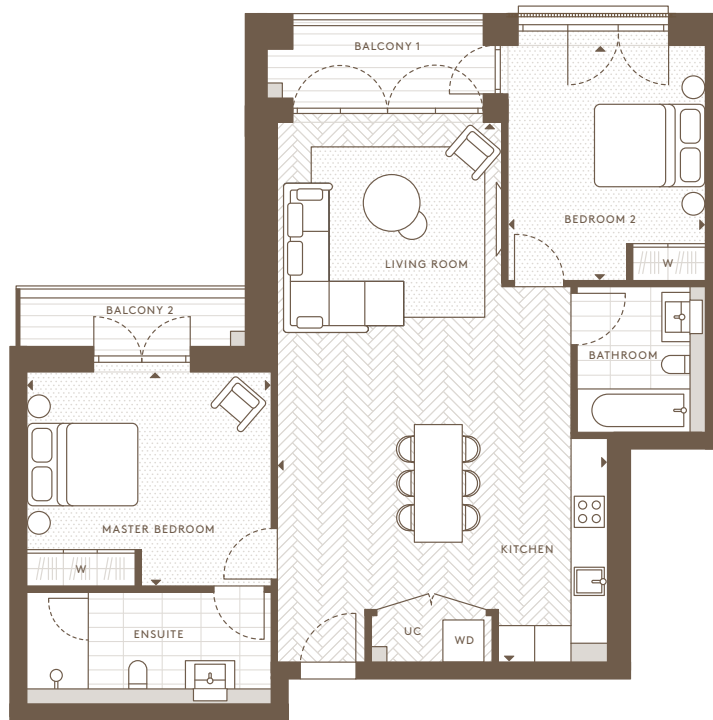


HORNSEY

TOWN HALL

2 BEDROOM APARTMENT

Internal Area (NSA)	84.14 sq m / 905.70 sq ft
Living Area	5461 x 8921 mm
Master Bedroom	4034 x 3534 mm
Bedroom 2	3277 x 3885 mm
Balcony 1	5.08 sq m / 54.67 sq ft
Balcony 2	3.51 sq m / 37.78 sq ft



3rd Floor
Apartments: AS 35



Floorplans are intended to give a general indication of the proposed floor layout and refer to approximate measurements only. All stated dimensions are measures from the arrow points and are subject to tolerances of +-5%. You are strongly advised not to order any carpets, appliances or any other goods which depend on accurate dimension before carrying out a check measure within your reserved plot following build completion. Total apartment dimension are given in NSA (Net Sales Area).

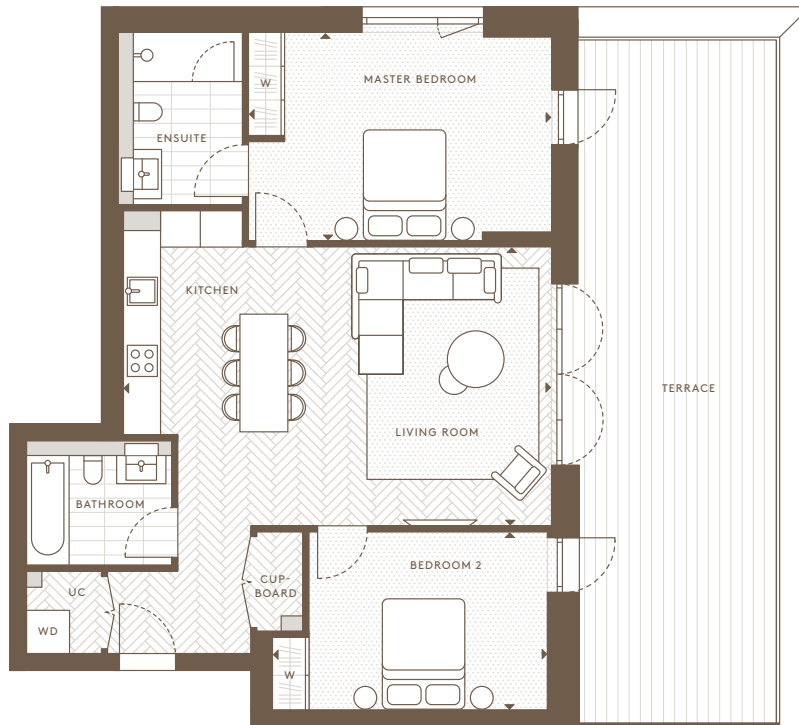


HORNSEY

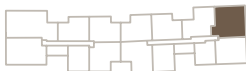
TOWN HALL

2 BEDROOM APARTMENT

Internal Area (NSA)	82.95 sq m / 892.82 sq ft
Living Area	7064 x 4608 mm
Master Bedroom	5014 x 3445 mm
Bedroom 2	4547 x 2939 mm
Terrace	38.33 sq m / 412.56 sq ft



3rd Floor
Apartments: AS 36



Floorplans are intended to give a general indication of the proposed floor layout and refer to approximate measurements only. All stated dimensions are measures from the arrow points and are subject to tolerances of +-5%. You are strongly advised not to order any carpets, appliances or any other goods which depend on accurate dimension before carrying out a check measure within your reserved plot following build completion. Total apartment dimension are given in NSA (Net Sales Area).

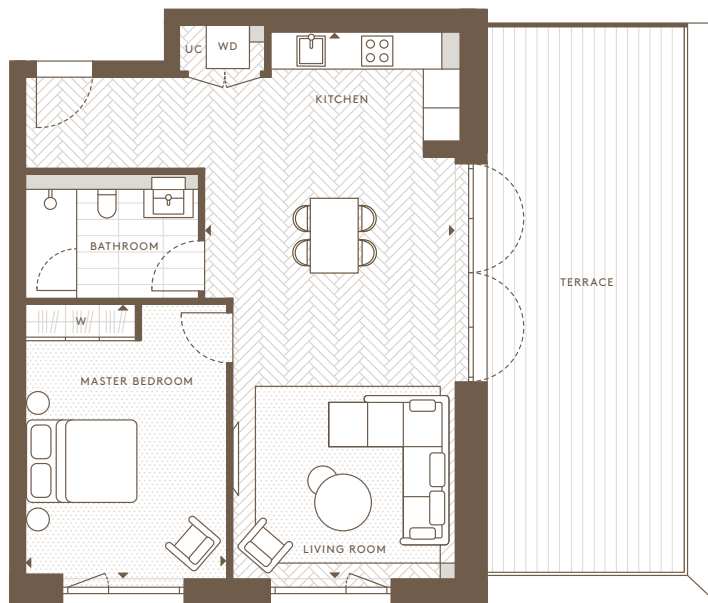


HORNSEY

TOWN HALL

1 BEDROOM APARTMENT

Internal Area (NSA)	62.72 sq m / 675.15 sq ft
Living Area	4144 x 9028 mm
Master Bedroom	3309 x 4528 mm
Terrace	30.59 sq m / 329.32 sq ft



3rd Floor
Apartments: AS 37



Floorplans are intended to give a general indication of the proposed floor layout and refer to approximate measurements only. All stated dimensions are measures from the arrow points and are subject to tolerances of +/-5%. You are strongly advised not to order any carpets, appliances or any other goods which depend on accurate dimension before carrying out a check measure within your reserved plot following build completion. Total apartment dimension are given in NSA (Net Sales Area).



HORNSEY

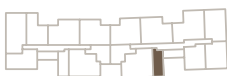
TOWN HALL

3 BEDROOM DUPLEX PENTHOUSE

Internal Area (NSA)	128.96 sq m / 1388.06 sq ft
Living Area	7460 x 5084 mm
Master Bedroom	3110 x 3900 mm
Bedroom 2	4000 x 2904 mm
Bedroom 3	3380 x 3225 mm
Terrace	74.75 sq m / 804.63 sq ft



4th Floor
Apartments: AS 41



5th Floor
Apartments: AS 41



Floorplans are intended to give a general indication of the proposed floor layout and refer to approximate measurements only. All stated dimensions are measures from the arrow points and are subject to tolerances of +/-5%. You are strongly advised not to order any carpets, appliances or any other goods which depend on accurate dimension before carrying out a check measure within your reserved plot following build completion. Total apartment dimension are given in NSA (Net Sales Area).

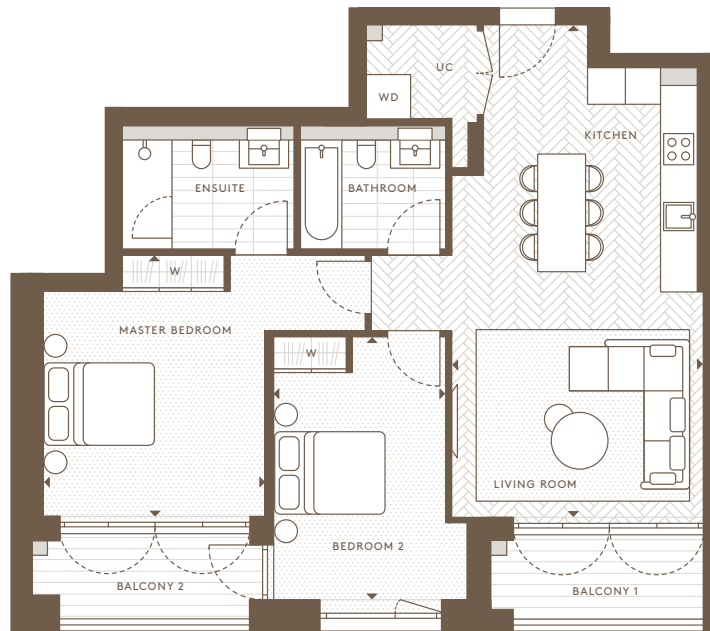


HORNSEY

TOWN HALL

2 BEDROOM APARTMENT

Internal Area (NSA)	79.44 sq m / 855.07 sq ft
Living Area	4171 x 8139 mm
Master Bedroom	3704 x 4326 mm
Bedroom 2	2841 x 4340 mm
Balcony 1	5.18 sq m / 55.76 sq ft
Balcony 2	5.47 sq m / 58.88 sq ft



4th Floor
Apartments: AS 42



Floorplans are intended to give a general indication of the proposed floor layout and refer to approximate measurements only. All stated dimensions are measures from the arrow points and are subject to tolerances of +-5%. You are strongly advised not to order any carpets, appliances or any other goods which depend on accurate dimension before carrying out a check measure within your reserved plot following build completion. Total apartment dimension are given in NSA (Net Sales Area).



HORNSEY

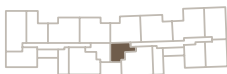
TOWN HALL

3 BEDROOM DUPLEX PENTHOUSE

Internal Area (NSA)	137.70 sq m / 1482.20 sq ft
Living Area	7160 x 5590 mm
Master Bedroom	3110 x 4000 mm
Bedroom 2	3875 x 2904 mm
Bedroom 3	4083 x 3297 mm
Balcony	3.50 sq m / 37.72 sq ft
Terrace	55.17 sq m / 593.80 sq ft



4th Floor
Apartments: AS 43



5th Floor
Apartments: AS 43



Floorplans are intended to give a general indication of the proposed floor layout and refer to approximate measurements only. All stated dimensions are measures from the arrow points and are subject to tolerances of +/-5%. You are strongly advised not to order any carpets, appliances or any other goods which depend on accurate dimension before carrying out a check measure within your reserved plot following build completion. Total apartment dimension are given in NSA (Net Sales Area).

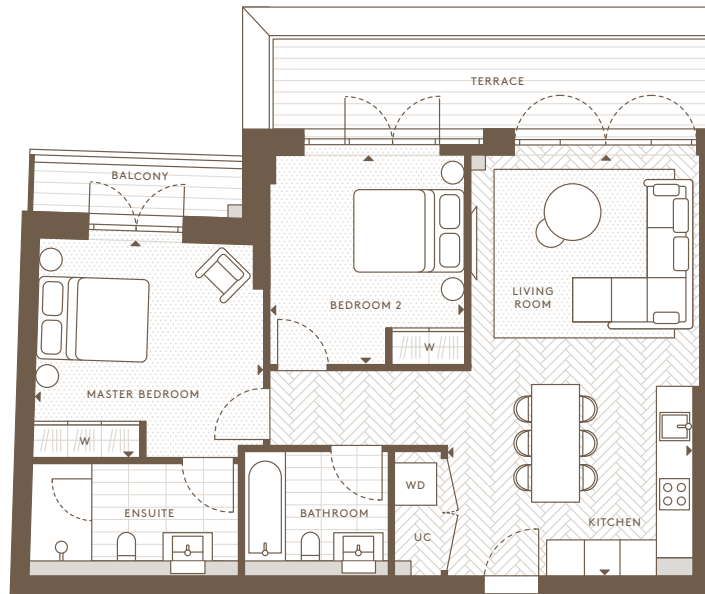


HORNSEY

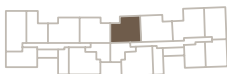
TOWN HALL

2 BEDROOM APARTMENT

Internal Area (NSA)	71.05 sq m / 764.83 sq ft
Living Area	4062 x 6957 mm
Master Bedroom	3750 x 3579 mm
Bedroom 2	3211 x 3457 mm
Balcony	3.28 sq m / 35.30 sq ft
Terrace	12.11 sq m / 130.35 sq ft



4th Floor
Apartments: AS 44



Floorplans are intended to give a general indication of the proposed floor layout and refer to approximate measurements only. All stated dimensions are measures from the arrow points and are subject to tolerances of +-5%. You are strongly advised not to order any carpets, appliances or any other goods which depend on accurate dimension before carrying out a check measure within your reserved plot following build completion. Total apartment dimension are given in NSA (Net Sales Area).

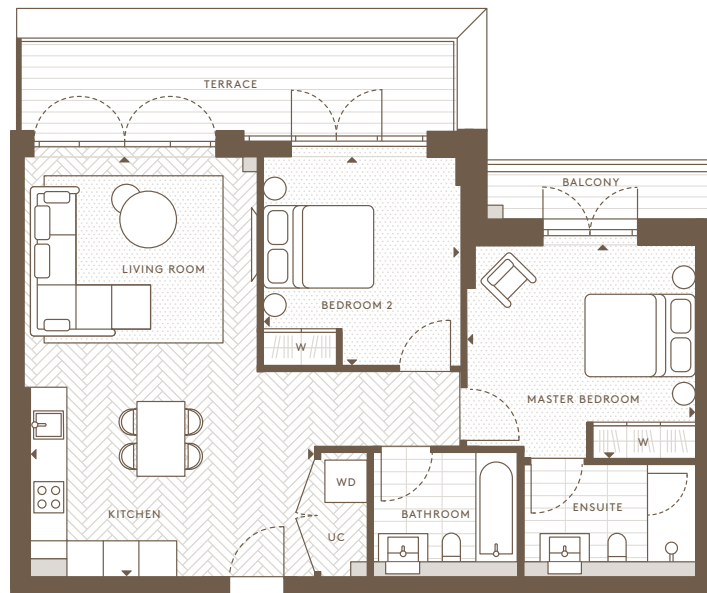


HORNSEY

TOWN HALL

2 BEDROOM APARTMENT

Internal Area (NSA)	71.55 sq m / 770.19 sq ft
Living Area	4700 x 6957 mm
Master Bedroom	3794 x 3537 mm
Bedroom 2	3250 x 3457 mm
Balcony	3.52 sq m / 37.89 sq ft
Terrace	12.11 sq m / 130.35 sq ft



4th Floor
Apartments: AS 45



Floorplans are intended to give a general indication of the proposed floor layout and refer to approximate measurements only. All stated dimensions are measures from the arrow points and are subject to tolerances of +/-5%. You are strongly advised not to order any carpets, appliances or any other goods which depend on accurate dimension before carrying out a check measure within your reserved plot following build completion. Total apartment dimension are given in NSA (Net Sales Area).

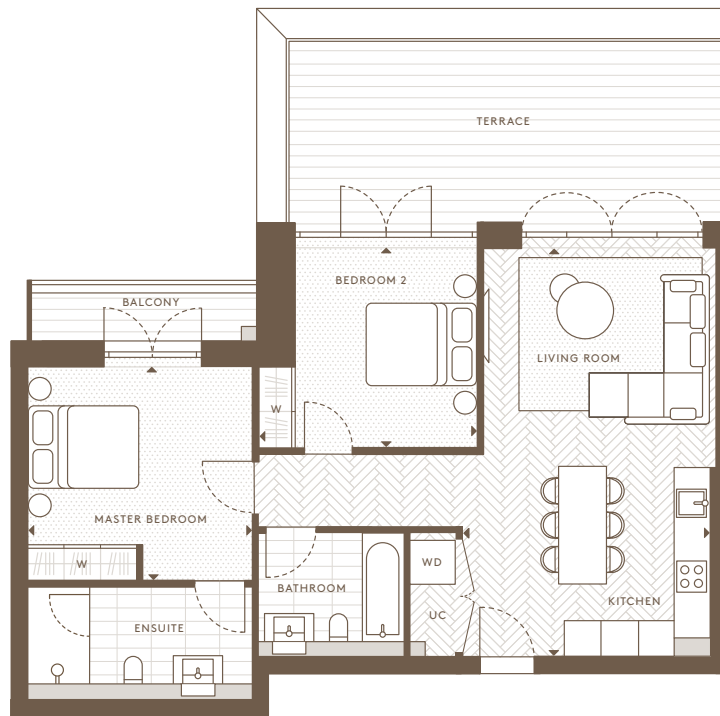


HORNSEY

TOWN HALL

2 BEDROOM APARTMENT

Internal Area (NSA)	70.79 sq m / 761.94 sq ft
Living Area	4098 x 6758 mm
Master Bedroom	3714 x 3535 mm
Bedroom 2	3600 x 3308 mm
Balcony	3.50 sq m / 37.67 sq ft
Terrace	22.95 sq m / 247.03 sq ft



4th Floor
Apartments: AS 46



Floorplans are intended to give a general indication of the proposed floor layout and refer to approximate measurements only. All stated dimensions are measures from the arrow points and are subject to tolerances of +-5%. You are strongly advised not to order any carpets, appliances or any other goods which depend on accurate dimension before carrying out a check measure within your reserved plot following build completion. Total apartment dimension are given in NSA (Net Sales Area).

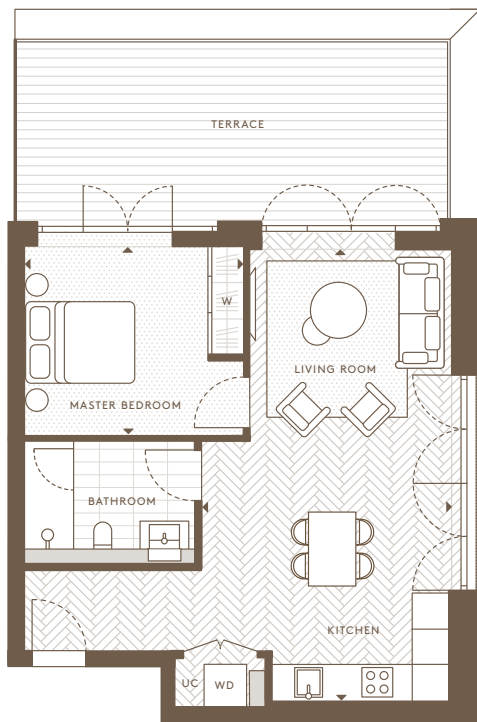


HORNSEY

TOWN HALL

1 BEDROOM APARTMENT

Internal Area (NSA)	52.41 sq m / 564.19 sq ft
Living Area	4216 x 7540 mm
Master Bedroom	3665 x 3158 mm
Terrace	23.00 sq m / 247.56 sq ft



4th Floor
Apartments: AS 47



Floorplans are intended to give a general indication of the proposed floor layout and refer to approximate measurements only. All stated dimensions are measures from the arrow points and are subject to tolerances of +/-5%. You are strongly advised not to order any carpets, appliances or any other goods which depend on accurate dimension before carrying out a check measure within your reserved plot following build completion. Total apartment dimension are given in NSA (Net Sales Area).

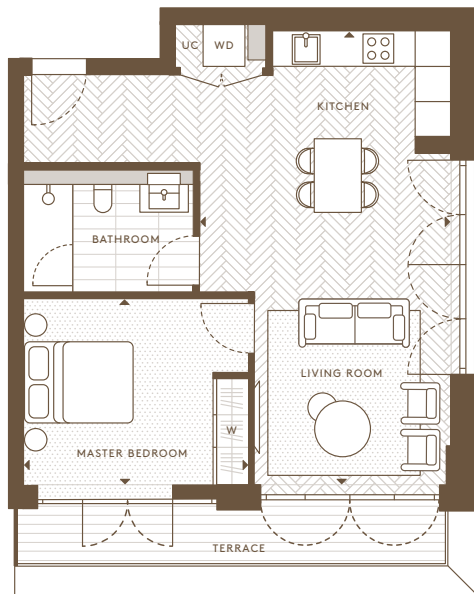


HORNSEY

TOWN HALL

1 BEDROOM APARTMENT

Internal Area (NSA)	53.16 sq m / 572.24 sq ft
Living Area	4220 x 7628 mm
Master Bedroom	3765 x 3128 mm
Terrace	7.52 sq m / 80.92 sq ft



4th Floor
Apartments: AS 48



Floorplans are intended to give a general indication of the proposed floor layout and refer to approximate measurements only. All stated dimensions are measures from the arrow points and are subject to tolerances of +/-5%. You are strongly advised not to order any carpets, appliances or any other goods which depend on accurate dimension before carrying out a check measure within your reserved plot following build completion. Total apartment dimension are given in NSA (Net Sales Area).

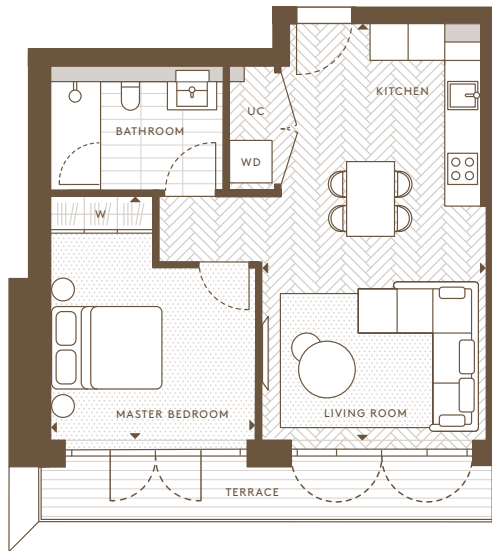


HORNSEY

TOWN HALL

1 BEDROOM APARTMENT

Internal Area (NSA)	46.80 sq m / 503.75 sq ft
Living Area	3706 x 6878 mm
Master Bedroom	3400 x 4027 mm
Terrace	7.71 sq m / 83.00 sq ft



4th Floor
Apartments: AS 49



Floorplans are intended to give a general indication of the proposed floor layout and refer to approximate measurements only. All stated dimensions are measures from the arrow points and are subject to tolerances of +/-5%. You are strongly advised not to order any carpets, appliances or any other goods which depend on accurate dimension before carrying out a check measure within your reserved plot following build completion. Total apartment dimension are given in NSA (Net Sales Area).