

PARK VIEW

PARK VIEW

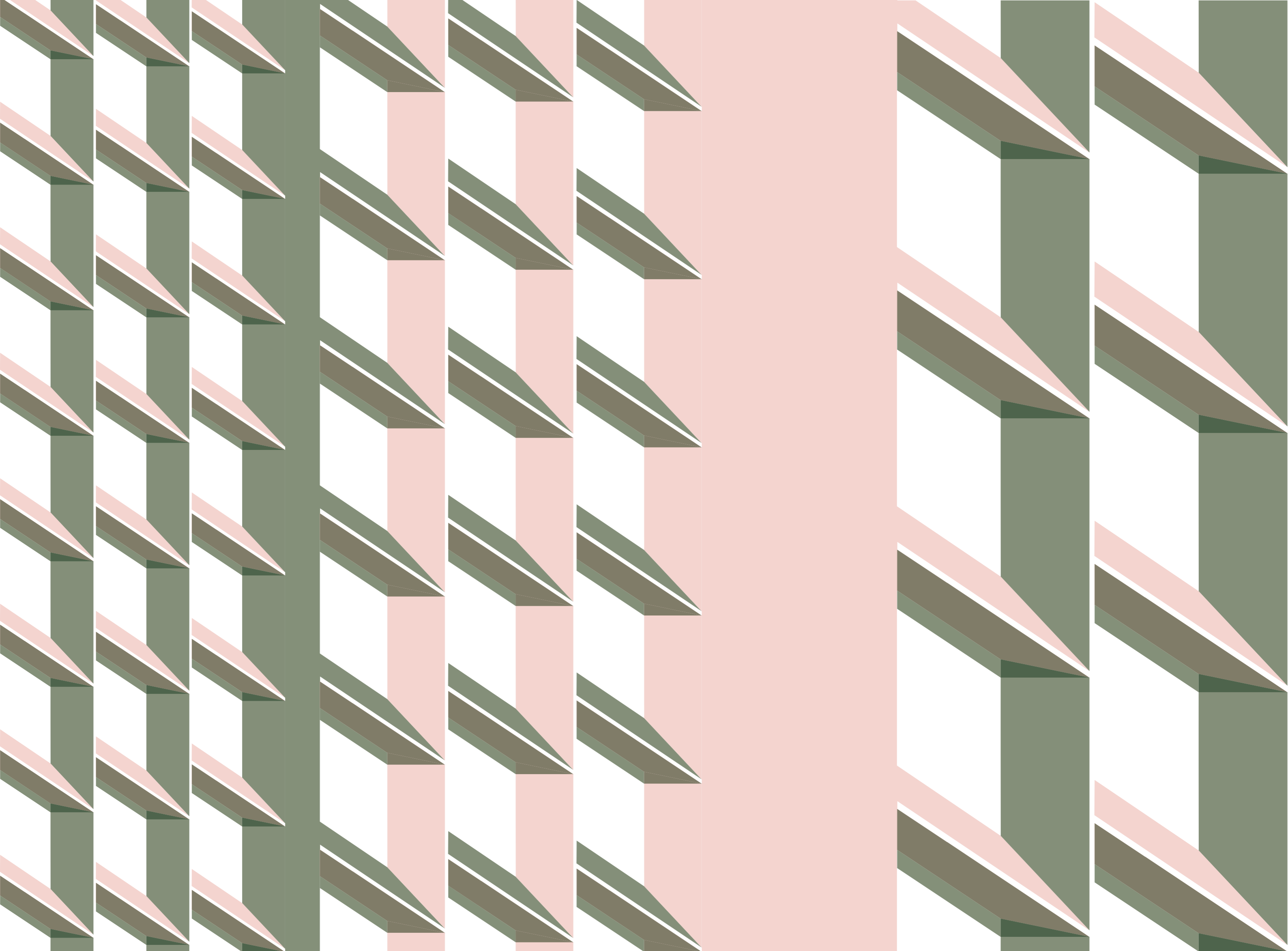
Victoria Riverside

Floor Plans

PARK VIEW

Homes by
 **FEC**

PARK VIEW



Set in between the greenery of the City River Park and the hustle and bustle of the city centre, this landmark development is home to over 634 new apartments and townhouses in Manchester's emerging Red Bank neighbourhood.

Victoria Riverside



Connections

▶ MANCHESTER VICTORIA

8 minute walk • 4 minute cycle



▶ MANCHESTER PICCADILLY

8 minute cycle • 17 minute metro journey



▶ SALFORD CENTRAL

8 minute cycle • 16 minute bus journey



▶ OLD TRAFFORD

15 minutes by car • 34 minutes by public transport



▶ NORTHERN QUARTER

16 minute walk • 6 minute cycle



▶ MANCHESTER AIRPORT

26 minutes by car • 47 minutes by public transport

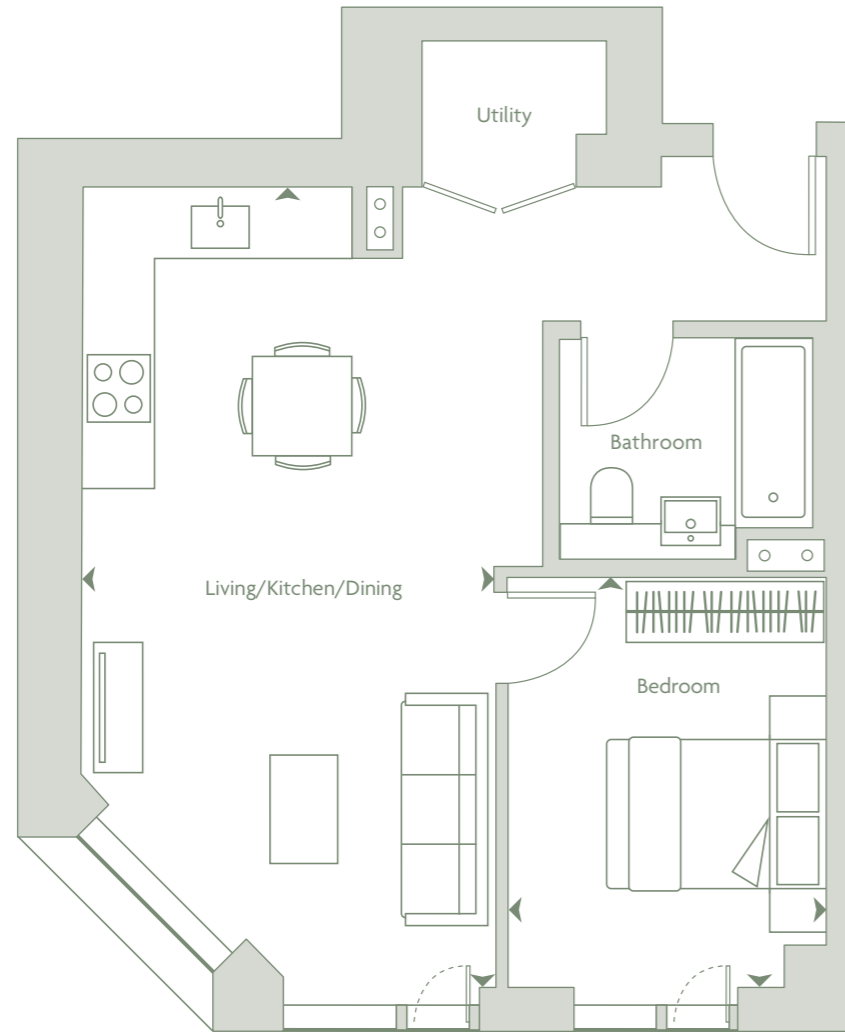


▶ LONDON EUSTON

2hrs 46 minutes by public transport

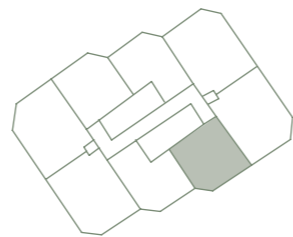


1 BED APARTMENT



Features on floors
 02-22 (Apartment 006)
 23-25 (Apartment 005)

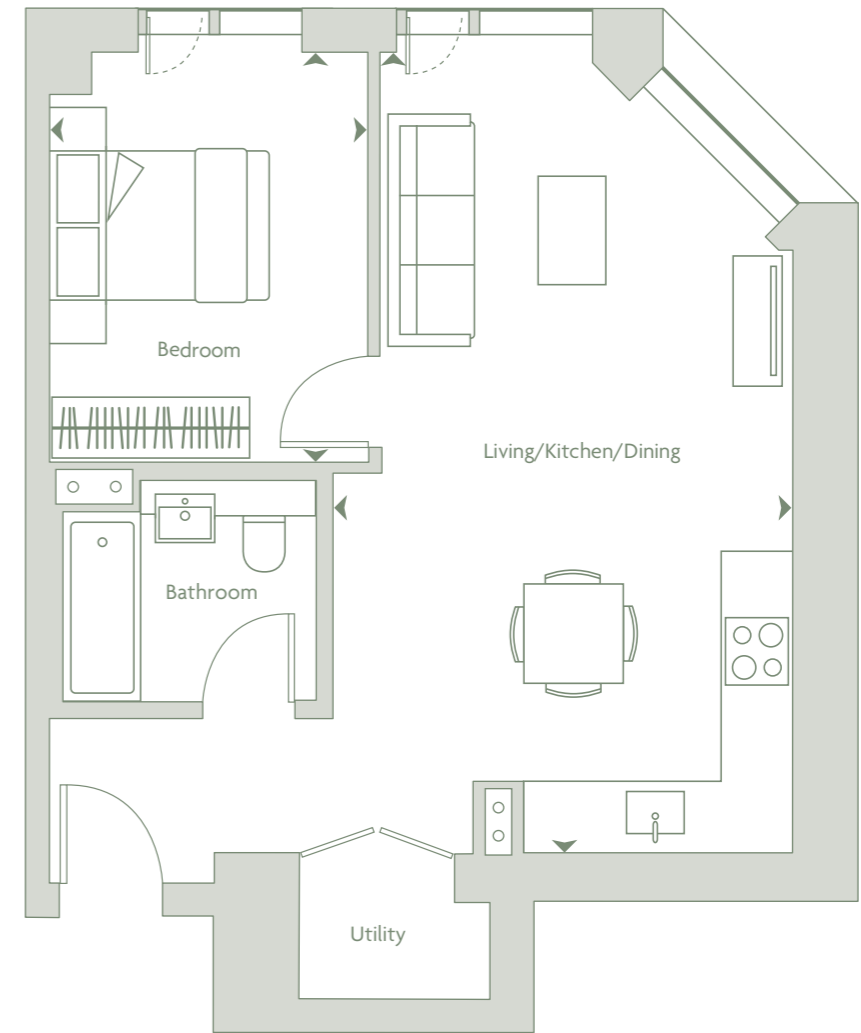
Living / Kitchen / Dining 7285 x 3760mm
 Bedroom 1 3731 x 2905mm



Internal Areas (NIA) 50.1 sq m 539.2 sq ft

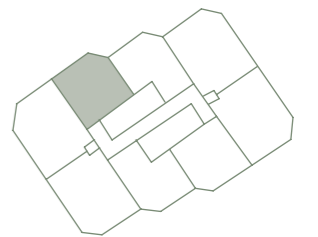
Apartment locator

1 BED APARTMENT



Features on floors
 02-22 (Apartment 002)

Living / Kitchen / Dining 7340 x 4185mm
 Bedroom 1 3731 x 2905mm

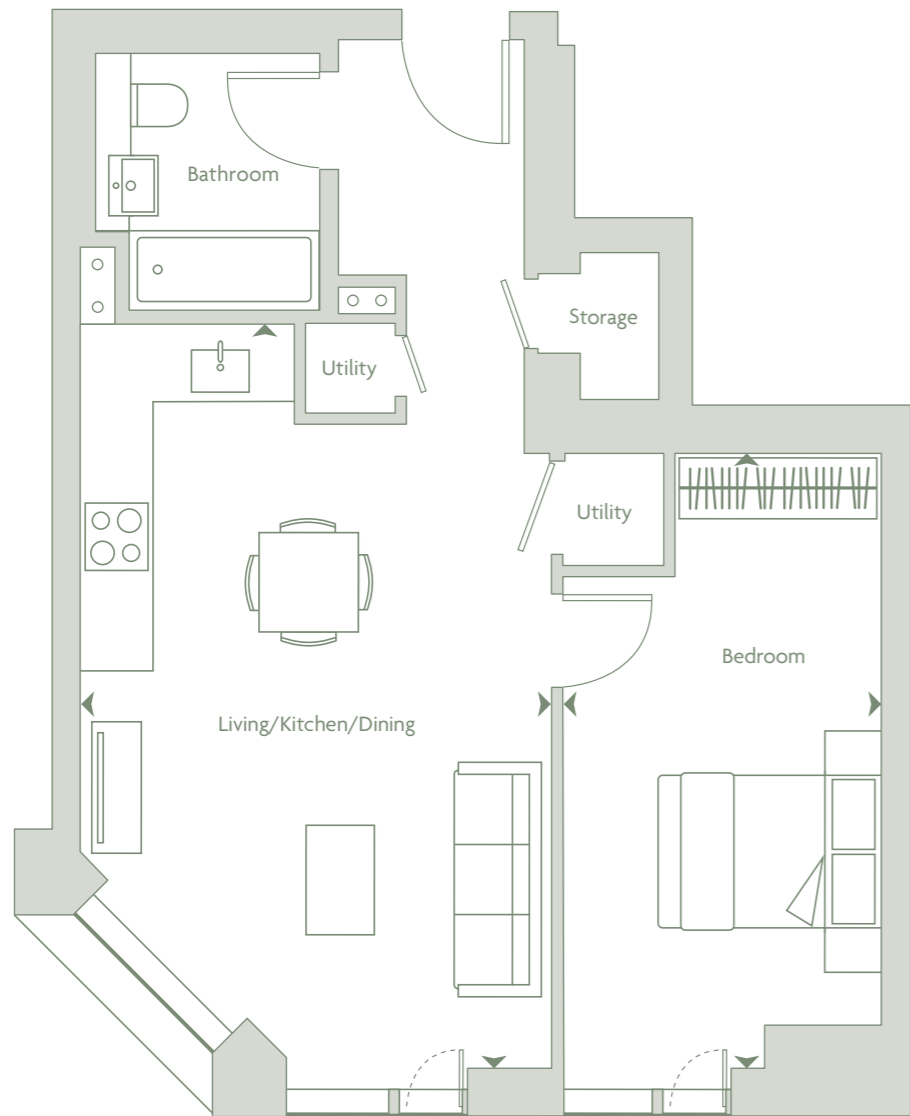


Internal Areas (NIA) 50.0 sq m 538.1 sq ft

Apartment locator



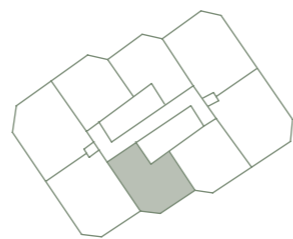
1 BED APARTMENT



Features on floors
 02-22 (Apartment 007)
 23-25 (Apartment 006)

Living / Kitchen / Dining
 Bedroom 1

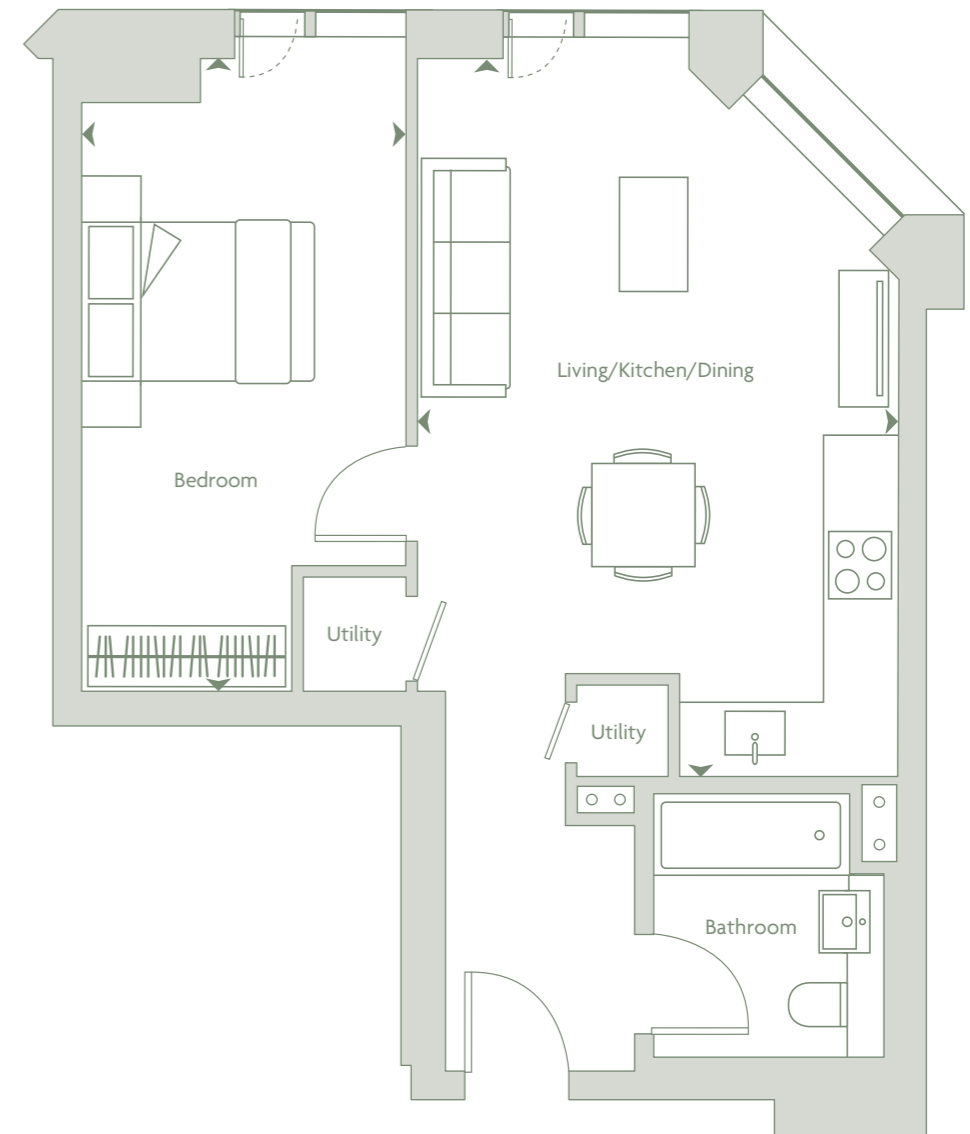
6595 x 4205mm
 5485 x 2840mm



Internal Areas (NIA) 53.1 sq m 571.5 sq ft

Apartment locator

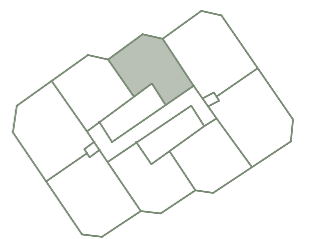
1 BED APARTMENT



Features on floors
 02-22 (Apartment 003)

Living / Kitchen / Dining
 Bedroom 1

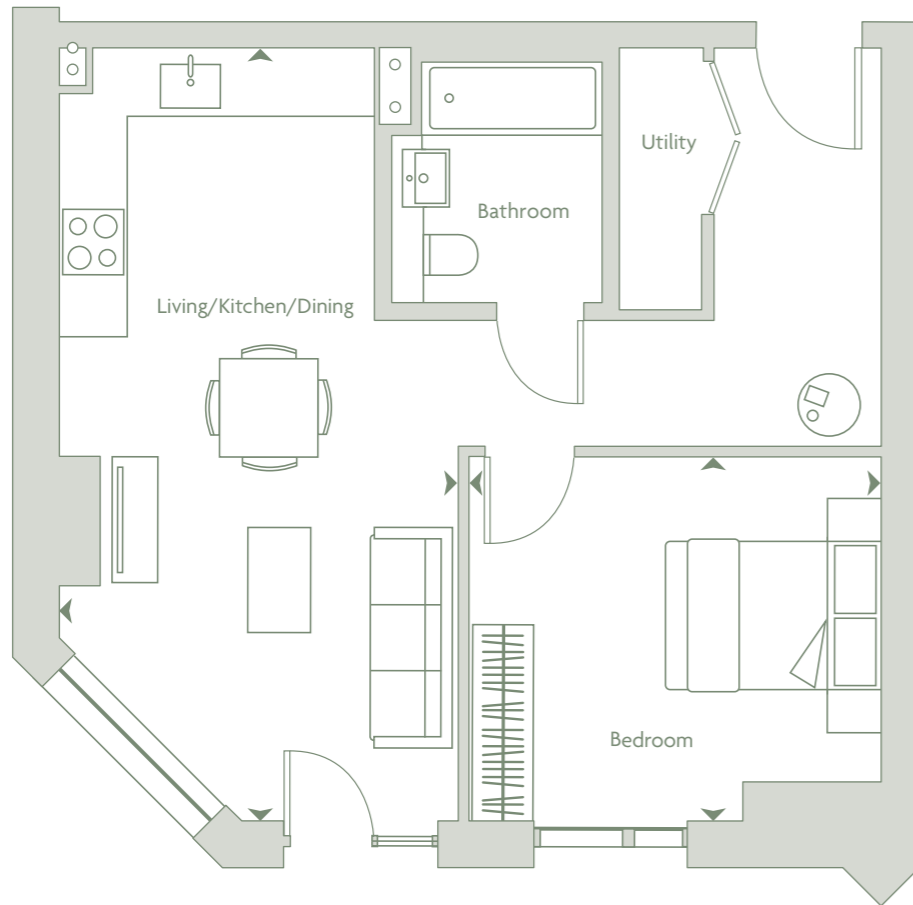
6285 x 4205mm
 5540 x 2840mm



Internal Areas (NIA) 50.7 sq m 545.7 sq ft

Apartment locator

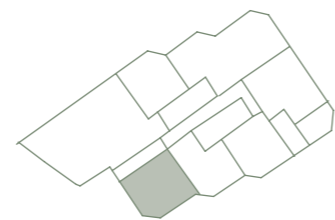
1 BED APARTMENT



Features on floors
01 (Apartment 004)

Living / Kitchen / Dining
Bedroom 1

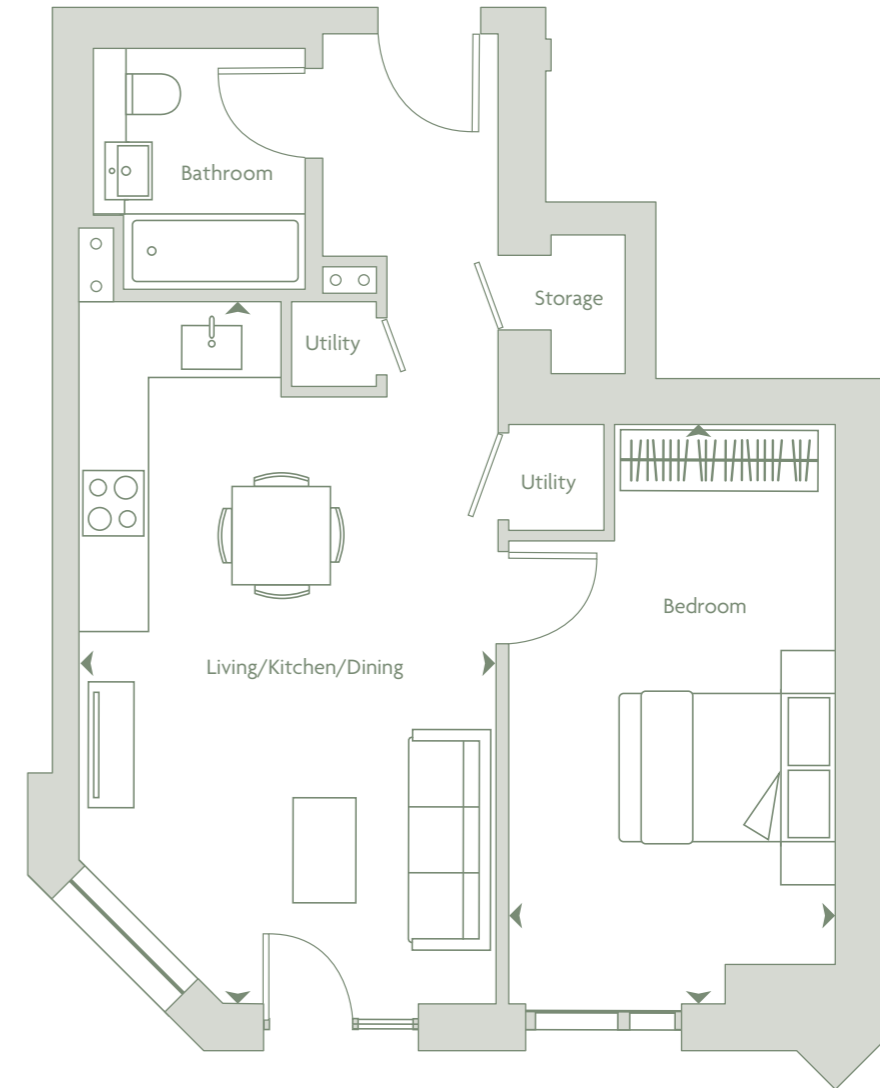
7363 x 3805mm
3923 x 3470mm



Internal Areas (NIA) 54.5 sq m 586.6 sq ft

Apartment locator

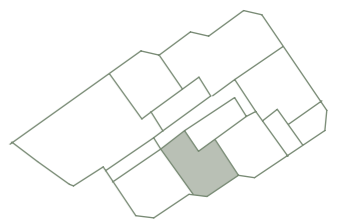
1 BED APARTMENT



Features on floors
01 (Apartment 003)

Living / Kitchen / Dining
Bedroom 1

6573 x 3960mm
5473 x 3085mm



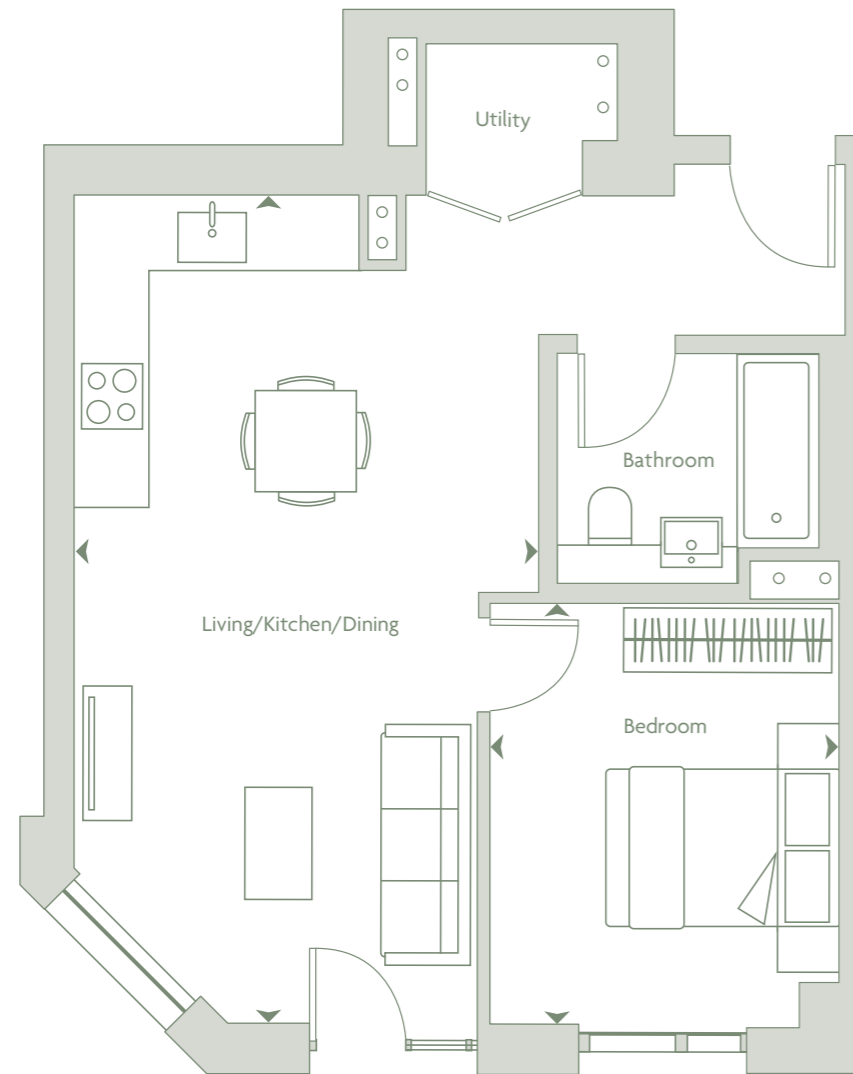
Internal Areas (NIA) 53.4 sq m 574.7 sq ft

Apartment locator



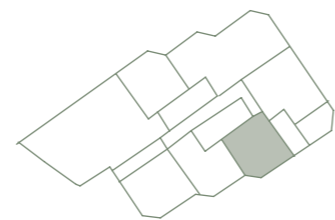
Typical 1 bed
kitchen layout

1 BED APARTMENT



Features on floors
01 (Apartment 002)

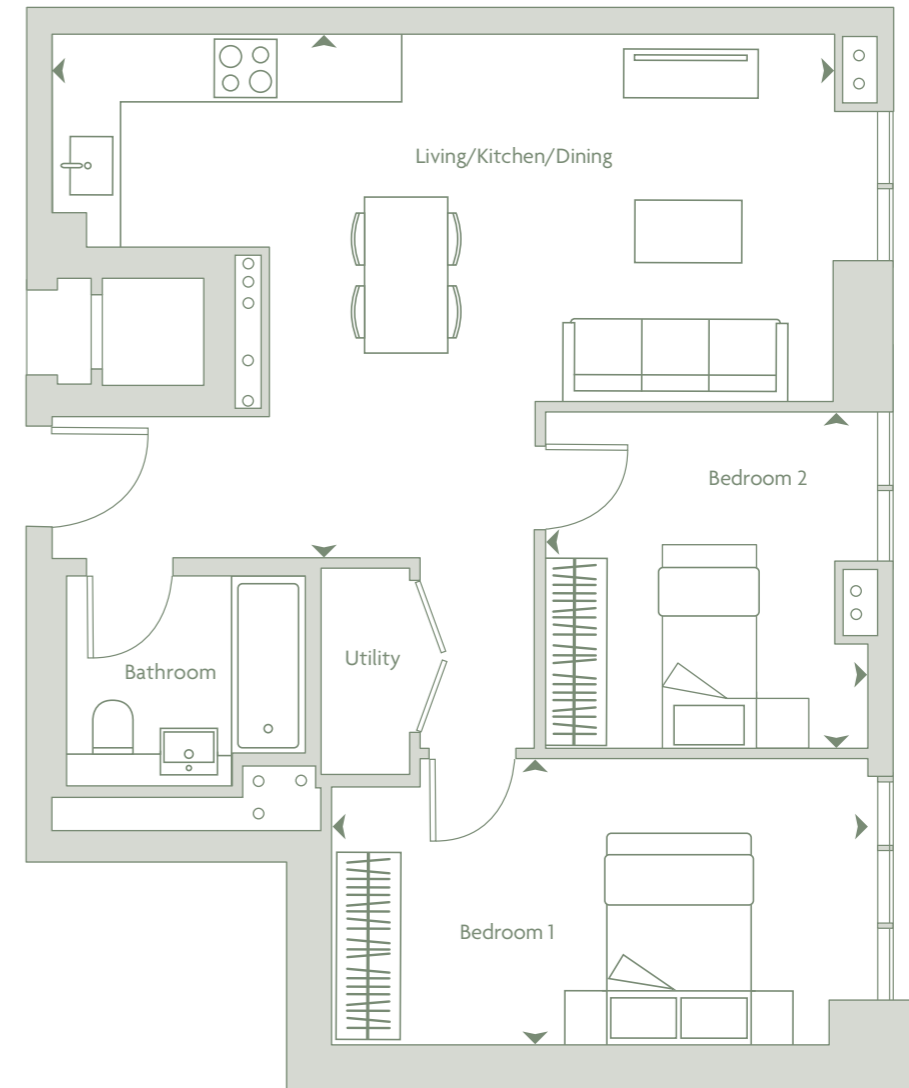
Living / Kitchen / Dining 7273 x 4080mm
Bedroom 1 3689 x 3060mm



Internal Areas (NIA) 50.2 sq m 540.3 sq ft

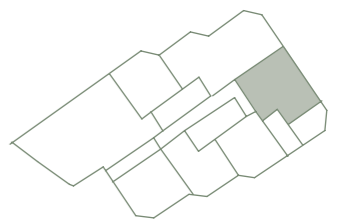
Apartment locator

2 BED APARTMENT



Features on floors
01 (Apartment 001)

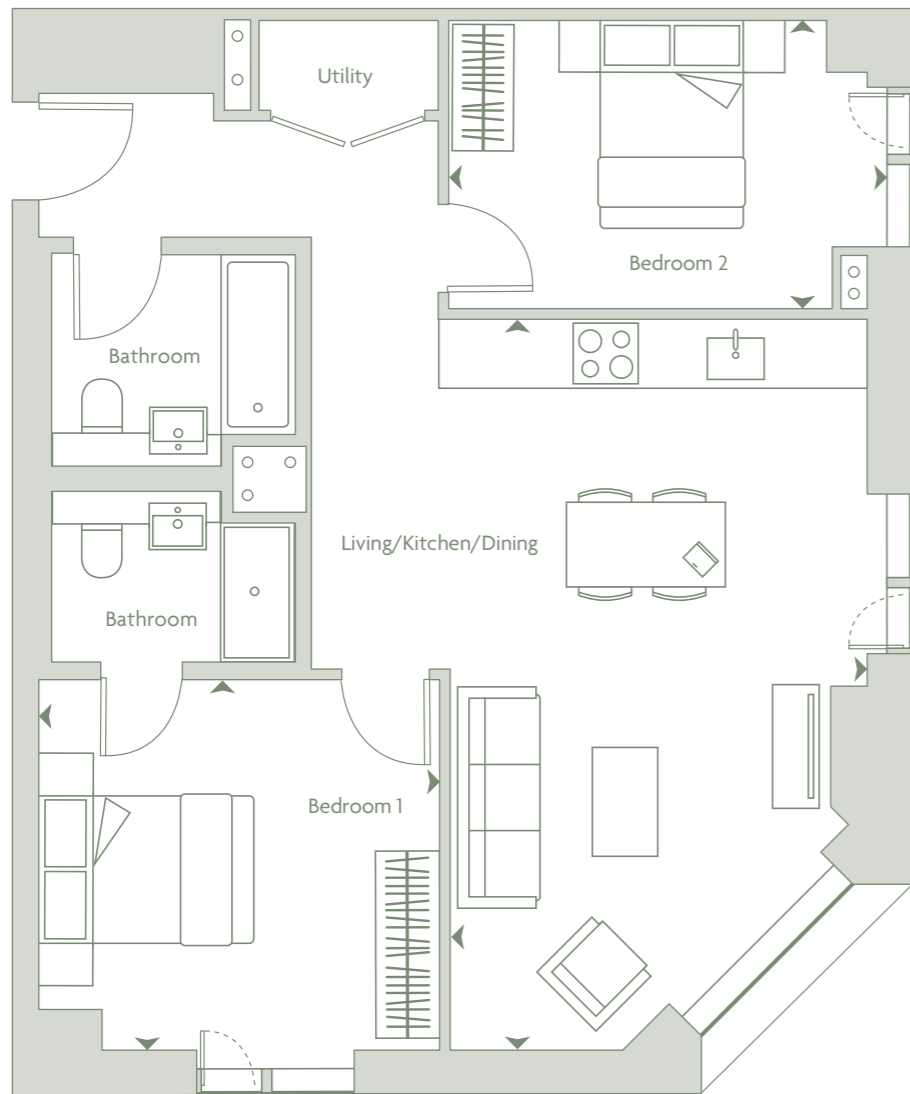
Living / Kitchen / Dining 7510 x 5026mm
Bedroom 1 5149 x 2748mm
Bedroom 2 3228 x 3092mm



Internal Areas (NIA) 65.0 sq m 699.6 sq ft

Apartment locator

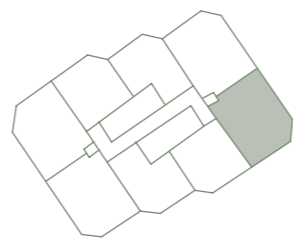
2 BED APARTMENT



Features on floors
 02-22 (Apartment 005)
 23-25 (Apartment 004)

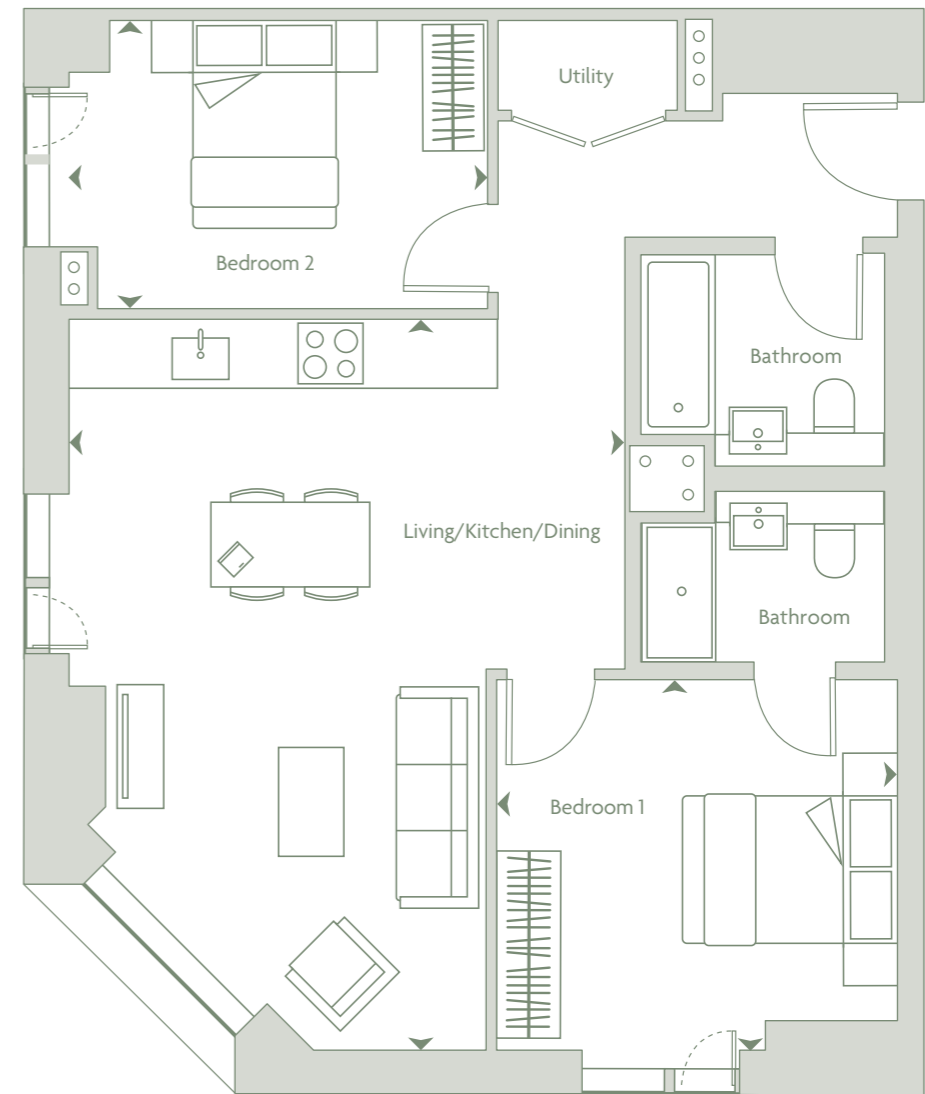
Living / Kitchen / Dining	6918 x 3947mm
Bedroom 1	3793 x 3507mm
Bedroom 2	4140 x 2727mm

Internal Areas (NIA) 71.8 sq m 772.8 sq ft



Apartment locator 

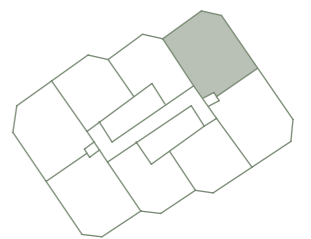
2 BED APARTMENT



Features on floors
 02-22 (Apartment 004)
 23-25 (Apartment 003)

Living / Kitchen / Dining	6918 x 5260mm
Bedroom 1	3793 x 3507mm
Bedroom 2	3960 x 2727mm

Internal Areas (NIA) 71.7 sq m 771.7 sq ft

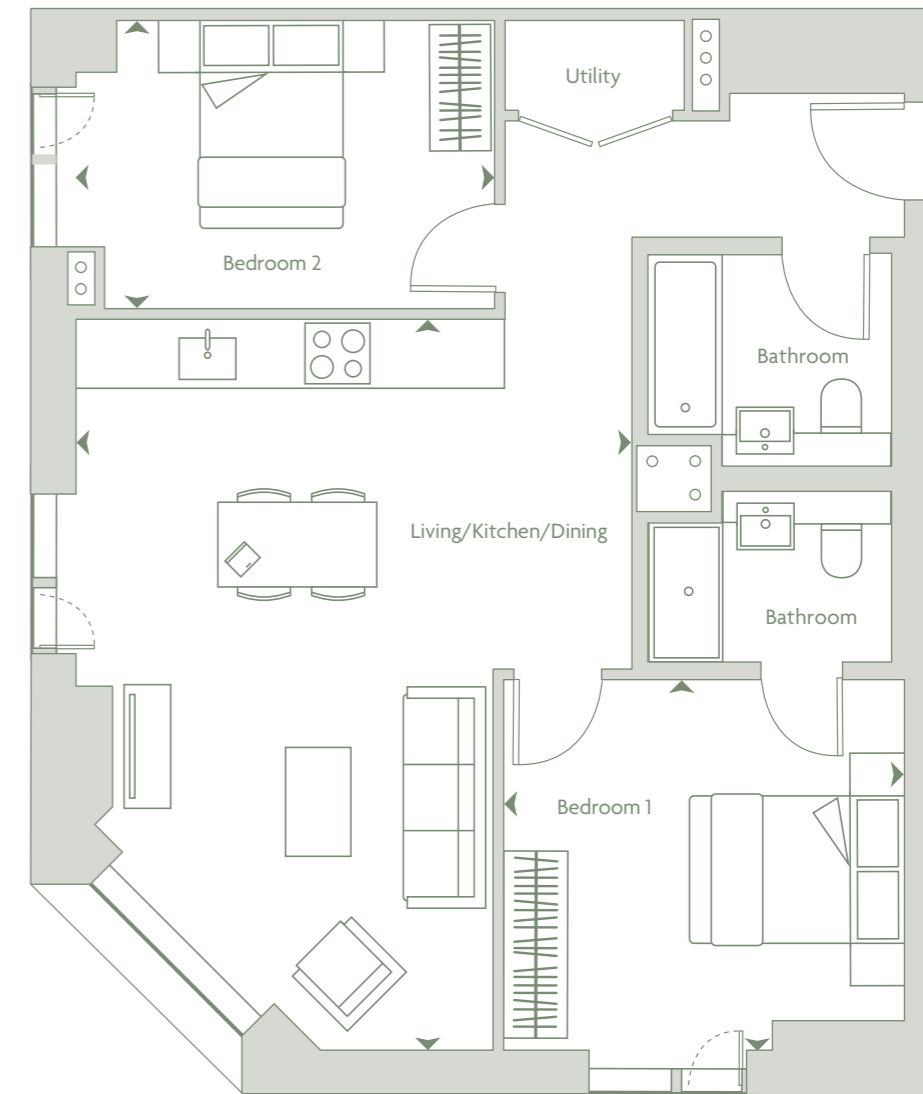


Apartment locator 

Typical ensuite



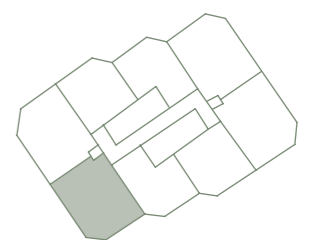
2 BED APARTMENT



Features on floors
 02-22 (Apartment 008)
 23-25 (Apartment 007)

Living / Kitchen / Dining	6918 x 5260mm
Bedroom 1	3793 x 3507mm
Bedroom 2	3960 x 2727mm

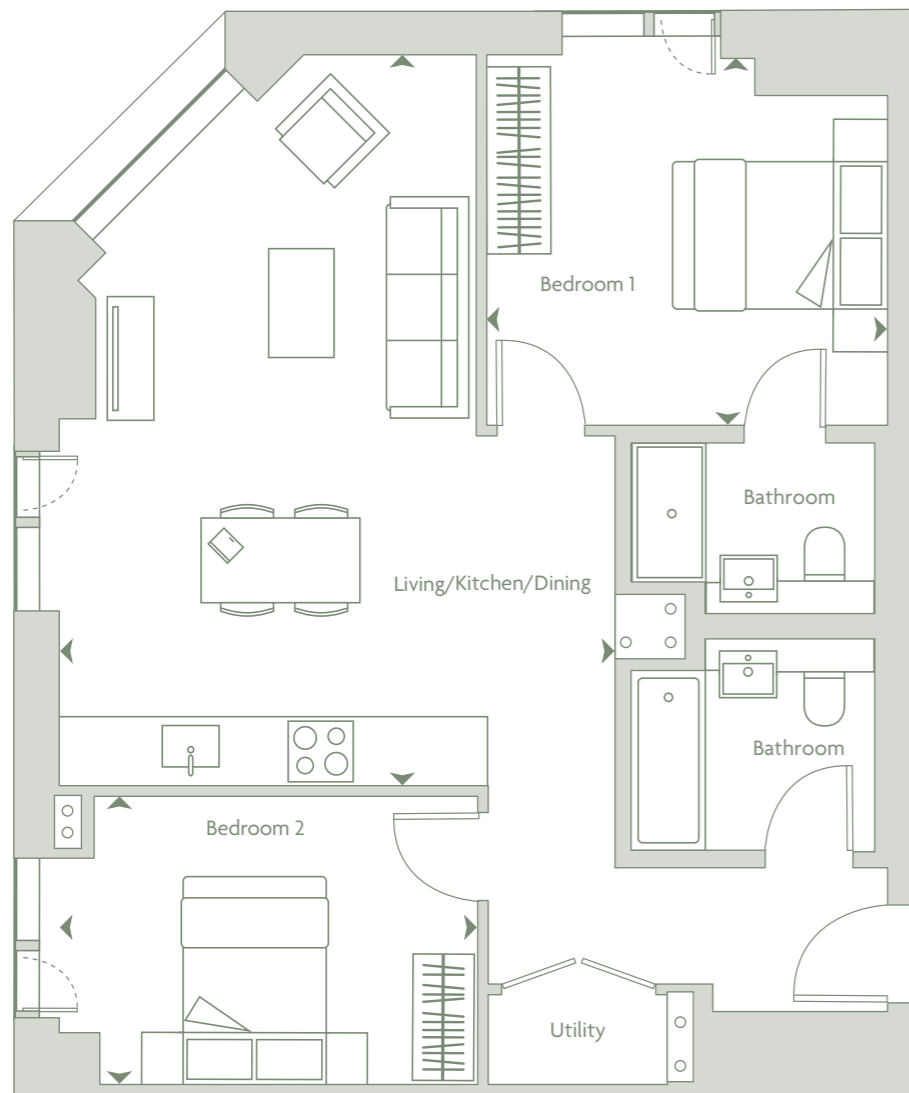
Internal Areas (NIA) 71.7 sq m 771.7 sq ft



Apartment locator 



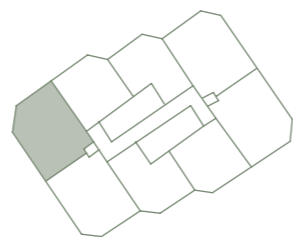
2 BED APARTMENT



Features on floors
02-25 (Apartment 001)

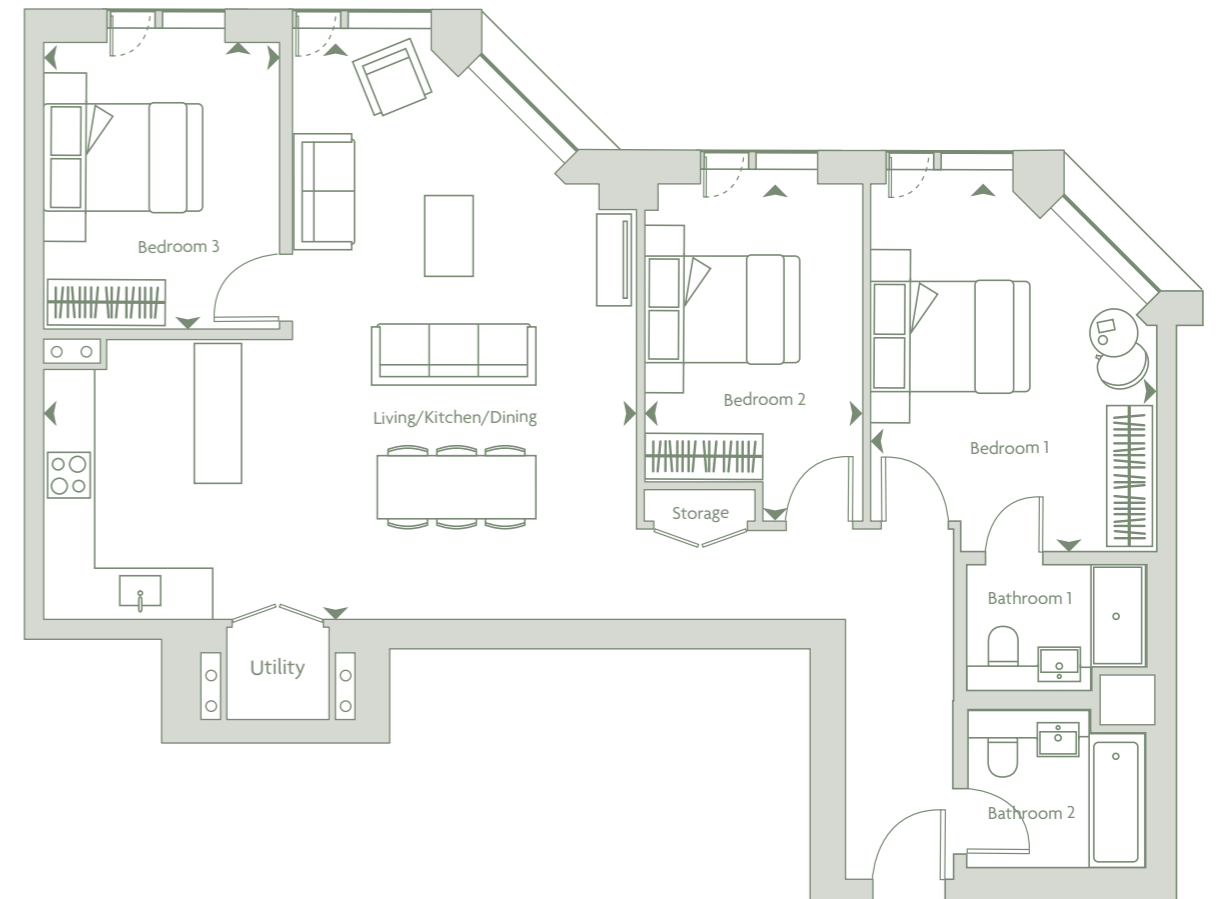
Living / Kitchen / Dining	6818 x 5260mm
Bedroom 1	3793 x 3507mm
Bedroom 2	3960 x 2727mm

Internal Areas (NIA) 71.7 sq m 771.7 sq ft



Apartment locator 

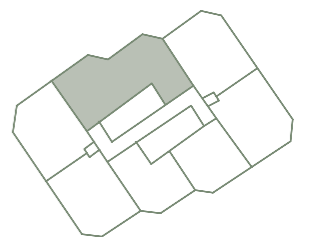
3 BED APARTMENT



Features on floors
23-25 (Apartment 002)

Living / Kitchen / Dining	7540 x 7340mm
Bedroom 1	4677 x 3640mm
Bedroom 2	4290 x 2780mm
Bedroom 3	3681 x 3000mm

Internal Areas (NIA) 102.1 sq m 1,098.9 sq ft



Apartment locator 





Contact

Email: info@victoriariverside.co.uk

Tel: 0161 509 7840

Address:

Second Floor,
Northern Assurance Building,
9-21 Princess Street,
Manchester
M2 4DN

Disclaimer

Floorplans are intended to give a general indication of the proposed floor layout and refer to approximate measurements only. All stated dimensions are measures from the arrow points and are subject to tolerances of $\pm 5\%$. You are strongly advised not to order any carpets, appliances or any other goods which depend on accurate dimension before carrying out a check measure within your reserved plot following build completion. Total apartment dimension are given in NSA (Net Sales Area).

PARK VIEW

PARK VIEW